

poligon®

Steel • Fabric • Wood



www.poligon.com

THE POLIGON ADVANTAGE

Poligon has been making shade structures since 1964. Our state-of-the-art engineering, drafting and manufacturing facility is organized for the sole purpose of designing and creating the industry's best structures. Your discerning eye will see that Poligon quality and craftsmanship speaks for itself.

All Poligon structures are engineered to order. Our standard shelters can be modified to fit your specific needs. If a standard shelter is not what you are looking for, our sales, design and engineering teams will work with you to create the perfect solution for your project.



Custom Western Skyline 30'x75'
Lubbock, TX

THE POLIGON MISSION

Delighting the Customer

Guiding Principles:

- 1) We will provide top quality and superior service, supported by extraordinary responsiveness.
- 2) We will pursue fast paced innovation; this will include input from our customers.
- 3) We will remain committed to continually invent and bring innovation to our customers.
- 4) We must have the flexibility to adjust and react to the market and our customers' needs.
- 5) We must pursue self-managed teams – involve everyone in everything.
- 6) We must listen/celebrate/recognize our employees.
- 7) We will lead by empowering our team members. We must pay attention – listen, and then prescribe the solution.
- 8) Create a sense of urgency – do it right, do it right now.
- 9) We must measure what's important, and make sure the organization is committed towards the outcome.
- 10) We must demand total integrity and know that we each must earn the right to be part of the team each day.

*Poligon has designed, engineered and
manufactured over 20,000 shelters*

Front Cover:
County of Riverside
Lake Skinner Amphitheater
Design by Schmidt Design Group, Inc

INDEX

POLIGON PROCESS.....4-5

CUSTOM SHELTERS.....6-15

SPECIALTY SHELTERS

Amphitheaters.....16-17
Western Skyline.....18
Northern Skyline.....19
Neo Classic.....20-21
Arch.....22
Monoslope.....22
Covered Walkways.....23

VIA SERIES

Crossing.....24
Nested Crossing/Gable.....25
Portal.....26
Signs.....27

TRELLISES

Concord.....28
Greco.....29
Calmeria.....29
Santa Fe.....30
Millennium.....31
Basic.....31

DODECAGONS

Clerestory Pavilion.....32
Pavilion.....33

OCTAGONS

Grand Carmel.....34
Carmel.....35
Mackinac.....36
Octagon.....36-37

HEXAGONS

Oxford.....38
Grand Haven.....39
Ironwood.....39
Tiara.....40
Hexagon.....40-41

RECTANGLES

Marquee.....42
Chelsea.....43
Hip Roof.....44-45
Gable Roof.....46-47

SQUARES

Carnival.....48-49
Square.....50-51

SMALL SHELTERS

Sun Shelters.....52
Kiosk & Info Centers.....53
Dugouts.....54
Privacy Shelters.....55
Enclosed.....55

TRANSIT SHELTERS.....56-57

POLIGON FABRIC.....58-59

POLIGON WOOD.....60-61

LINE DRAWINGS.....62-84

REFERENCE & OPTIONS.....85-95

poligon[®]
by
PORTER CORP[™]

4240 N 136th Avenue Holland, MI 49424

P: 616-399-1963 F: 616-399-9123

www.poligon.com

POLIGON PROCESS

Our process utilizes a series of checkpoints that involve the customers approval and identifies shelter specifications to deliver a quality product and service. We are deliberate and deeply focused on even the smallest details. From the materials we use, to the manufacturing tolerances we employ and even the way we transport your structure to the job site, nothing is ever left to chance.

When it all comes together...

1

INITIAL CONTACT - Contact your Poligon representative and we'll begin the discovery process. We will discuss your objectives, timelines, budgets and most importantly what you have in mind.

2

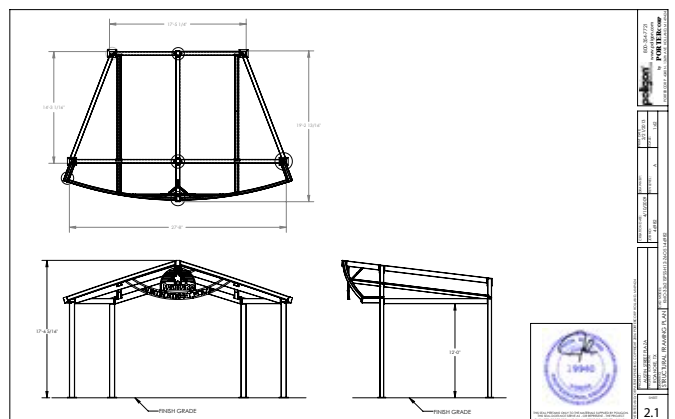
DESIGN - This is an iterative process. Your concept is refined and value engineering is performed. We function as an extension of your office, saving you time and money. Poligon can work from existing drawings or create original designs.



3

STAMPED ENGINEERING DRAWINGS / FINAL PRICING -

No need to hire another structural engineer. Our engineers have the resources and expertise to provide all your needs, from structural calculations to value engineering. Our drawings, complete with foundation design, are suitable and stamped for the permitting process, saving time and avoiding additional costs.



4

MATERIALS PROCUREMENT & COMPONENTS FABRICATION - All framing and roofing materials are procured through Poligon. This streamlines the process, reduces coordination issues, and moves your project into the manufacturing stage more quickly.

5

POWDER COATING - Finished parts receive our exclusive in-house Poli-5000® powder coating with epoxy primer; the toughest, most lustrous coating in the industry. We are Powder Coat Institute (PCI) 4000 certified.



6

PACKAGING and SHIPPING - Components are inspected throughout the manufacturing process and then inspected again prior to being carefully packaged. All shipments are on dedicated Polygon flatbed trucks.



7

INSTALLATION - Polygon's structural steel frames bolt together and do not require field welding or cutting of steel members. Our framing system not only hides nuts and bolts from sight, it also eliminates bird nesting.



8

ONGOING SUPPORT - Throughout the process, Polygon's single-source responsibility improves communication and ensures that any unforeseen issues get resolved quickly and cost effectively.



Multi-Gable Roof w/ Trellis
Kissimmee, FL

Already the most active park in the community, Kissimmee, Florida Lakefront Park is being renovated into a world-class park to aid the city's downtown and lakefront redevelopment. With the opening of a new SunRail station, visitors from across Central Florida will have easy access to this wonderful park. The multi-gable shelter with attached trellis (pictured) is the first of 20+ Polygon shelters used throughout the park. While housing concessions and restrooms, it creates plenty of shade for picnics and park guests.



Gable Roof
Kissimmee, FL

Construction Manager: Burkhardt Construction - West Palm Beach, FL
Designer: AECOM



Trellis
Kissimmee, FL



Flat Trellis
Hoboken, NJ



Hip Roof 24'x60'
St. Louis, MO



Gable Roof 30'x40'
Winston-Salem, NC



Pavilion 90'
Clermont, FL

A custom dodecagon amphitheater in Clermont, Florida has an attached 9,000 square foot building including a performance stage. At 90' wide, this shelter provides covered seating for approximately 400 people. Structural Insulated Panels (SIPs) support the standing seam roof to help keep the area cooler in the hot sun and improve acoustics.

Architect: GatorSketch - Clermont, FL



Walkway Cover
Arlington, TX

The walkway covers in Arlington, Texas highlight the pedestrian walkways along busy downtown roads. The ends are accented with a laser cut sign identifying the street name and custom ornamentation was designed to complement the shape of the roof. Additional walkway covers of various shapes and sizes were built along other streets to coordinate a safe and sheltered walkway system.

Architects: Townscape, Inc - Dallas, TX
Schrickel, Rollins & Associates - Arlington, TX



Walkway Cover
Arlington, TX



Walkway Cover
Arlington, TX



Trellis
San Diego, CA



Nested/Crossing Gateway 30'- 23'
Canyon, TX



Crossing/Trellis 15'x62'
Windsor, ON



Crossing 20'x30'
Dardenne, MO

A unique and eye-catching design was created for this crossing in Dardenne, MO. This shelter features our Winchester columns in patina green with partial stone wraps. The silver metallic roof is accented with ridge cresting to help deter birds and the gable ends are highlighted with truss style ornamentation.

Architect: SWT Design -
St. Louis, MO



Amphitheater
Riverside County, CA

Lake Skinner Park in Riverside County, California has the total park package, including a custom amphitheater with matching trellises and entrance sign. Each structure is highlighted with unique rays and curves creating an eye-catching flow that brings everything together.

Architect: Schmidt Design Group, Inc. - San Diego, CA



Sign
Riverside County, CA



Trellis
Riverside County, CA



Gable Roof 20'x270'
Jackson, MI



Extended Gable Crossing 50'x152'
Bullhead City, AZ



Trellis 10'x60'
Baltimore, MD



Integrated 90' Oxford and 40'x50' Gable Roof
Dalton, GA



Portal 20'
Frisco, TX



Single Tree Trellis 20'
(with perforated steel roof)
Mesa, AZ



Octagon with low reveal clerestory 73'
San Diego, CA



San Jose 20'
Miami, FL



Gable Roof/Hip Roof 24'x44'
Oklahoma City, OK



Lake Eva Community Park in Haines City, Florida has eighteen custom designed pavilions along with matching entrance signs to create a functional and coordinated look. Most of the pavilions are adjacent to the pools and lake to create a cool gathering place on those hot summer Florida days. The main pavilion accommodates many picnic tables and becomes a central focal point for the park.

Additional signs on page 27



Clerestory Pavilion 60'
(doors, windows and build-outs by others)
Cooperstown, NY



Hexagon 18' Gable Roof 48'x18'
Holland, MI



Pergola 20'
Spanish Fork, UT



Hip Roof 12'x36'
Bunker Hill, IN



Carnival 24'
Avalon, NJ



Wooster 18'
Lansing, MI



Chelsea 32'x84'
(with polycarbonate clerestory panels)
Holland, MI



Double Tree 20'x40'
Fishers, IN



Bleacher Cover
Grapevine, TX

KOKOMO AMPHITHEATER

KMO

Additional details page 62



KMO 65'x35'
(with gable ornamentation)
Kokomo, IN



KMO 30'x25'
(with gable ornamentation)
Fort Worth, TX



KMO 32'x21'
(with gable ornamentation)
Roanoke, TX

HOUSTON AMPHITHEATER

HHA

Additional details page 62



HHA 28'
Lockport, IL

Polygon amphitheaters can be designed with a structural insulated panel (SIPs) primary roof for improved acoustics. The shelters can be modified by adding handrails, custom ornamentation, integrated benches, lightning protection, electrical cutouts and an increase in the clearance height.

ALPINE AMPHITHEATER

ALP

Additional details page 62



ALP 73'x32'
Sherman, TX

WESTERN SKYLINE

WSL

Additional details page 63



WSL 20'
(with gable ornamentation)
Salt Lake City, UT



WSL 28'
Allen, TX

NORTHERN SKYLINE

NSL

Additional details page 63



NSL 24'x34'
Spanish Fork, UT



NSL 20'x24'
(with gable ornamentation)
Jessup, MD



NSL 30'x44'
Henderson, NV

NEO CLASSIC

NCS, NCR, NCH, NCO, NCG

Additional details page 64-65



NCO 40'
(with decorative cupola and lightning protection)
Oyster Bay, NY



NCG 11'x133'
Wilmington, NC

Bearing the signature look of classical Italian architecture, Polygon Neo Classic shelters are an excellent fit where elegance and a refined look are called for.

With a deep cornice and entablature system supported by round tapered Tuscan columns, this classical heritage is presented in a modern medium. For gable style structures a pediment decorative end wall system is also featured.

Each shelter is also designed with a structural insulated panel (SIP) roof for quick installation and an attractive interior surface.



NCR 24'x48'
Camp Lejeune, NC



NCO 72'
(with decorative cupola & custom clerestory polycarbonate panels)
Kansas City, MO

ARCH

ARC

Additional details page 66



ARC 24'x30'
North Highlands, CA



ARC 20'x21'
Fairview Park, OH

See page 66 for various roof overhangs.



MSL 40'x30'
(with custom pitch)
Escalante, UT

MONOSLOPE

MSL, MSE, MSX

Additional details page 66



MSE 30'x44'
St. Petersburg, FL

COVERED WALKWAY CANTILEVERED

CWC

Additional details page 67

Covered Walkway shelters are available with a single 30' bay or expandable in unlimited 20' bays.



CWC 10'x950'
San Jose, CA



CWE 16'
Atlantic City, NJ

COVERED WALKWAY EXTENDED

CWE

Additional details page 67

COVERED WALKWAY ARCHED

CWA

Additional details page 67



CWA 14'x58'
Burleson, TX

CROSSING

CRS

Additional details page 68



CRS 20'
Gainsville, GA



NESTED CROSSING/GABLE

CGN

Additional details page 68



CGN 29'-23'
(with decorative cupola, gable ornamentation & carmel ornamentation)
Binbrook, ON



CGN 24'-19'
(with decorative cupola)
Dallas, TX



CGN 30'-23'
Fort Worth, TX

PORTAL

PRT

Additional details page 69



PRT 11'
Winston-Salem, NC

SIGNS

SGA, SGB, SGC
Additional details page 69



SGB



SGA



SGC

Signs are available in either a digitally imaged high pressure laminate or in a laser-cut powder coated steel. See page 70 for choice of truss and latilla end options.



Enhanced SGB

CONCORD TRELLIS

CON

Additional details page 70



CON 82'
(with round columns)
Salt Lake City, UT



CON 18'x64'
(with round banded columns)
Augusta, GA

GRECO TRELLIS

GRE

Additional details page 71



TREF & GRE 22'
Fayetteville, NC

CALMERIA TRELLIS

CAL

Additional details page 71



CAL 50'
Suwanee, GA

SANTA FE TRELLIS

SFE

Additional details page 71

Detail of standard corbel



Santa Fe style latilla and optional medallion-style corbel

**SFE 20'**
(with round columns)
Hatch, NM

MILLENNIUM TRELLIS

MIL

Additional details page 72



MIL 9'x40'
(with plant climbing screens)

BASIC TRELLIS

TREF, TREG, TREA

Additional details page 72

Basic Trellises are available in Flat, Arch and Gable units.
Units function as stand-alones or in modular configurations.



TREF-F-G-F
Orem, UT



TREF
Broomfield, CO



TREG
Westchester, IL

CLERESTORY PAVILION

PLC

Additional details page 73



PLC 60'
(with frame vented cupola)
Noblesville, IN



PLC 86'
(with custom low reveal cupola, glazing by others)
Seattle, WA



PLC 66'
(with solar panels by others)
Washington D.C.

PAVILION

PVA

Additional details page 73



PVA 86'
(with custom low reveal clerestory)
Sugarhill, GA



Inside Pavilion Roof
(with frame vented cupola)



PVA 85'
(with frame vented cupola)
Newton, NJ

GRAND CARMEL

GCO3

Additional details page 74



GCO3 48'
(with decorative cupola, carmel ornamentation & railing)
Winston-Salem, NC



GCO3 47'
(with decorative cupola, carmel ornamentation & railing)
Newbern, NC



GCO3 58'
(with custom ornamentation and gutters)
Eden Prairie, MN

CARMEL

GCO2

Additional details page 74



GCO2 40'
(with decorative cupola, diamond ornamentation & railing)
Tucson, AZ



GCO2 32'
(with decorative cupola, carmel ornamentation & railing)
Canandaigua, NY



GCO2 27'
(with decorative cupola, sarasota ornamentation, round banded columns, and lightning protection)
Garfield, NJ

MACKINAC

MAC

Additional details page 75



MAC 50'x74'
Dahlgren, VA

OCTAGON

OTC

Additional details page 75



OTC 64'
Bonita, CA



OTC 48'
Princeton, AL



OTC 40'
(tile roof by others)
Brush, CO



OTC 36'
Irvine, CA



OTC 32'
Fontana, CA

OXFORD

GX0, GX02

Additional details page 76



GX0 22'
(with diamond ornamentation)
Allendale, MI



GX0 18'
(with carmel ornamentation)
Murfreesboro, TN



GX02 22'
(with decorative cupola & diamond ornamentation)
Kokomo, IN



GX02 32'
Sherman, TX



GX02 64'
(with open cupola, carmel ornamentation & banded round columns)
Augusta, GA

GRAND HAVEN

GHX

Additional details page 77



Grand Haven gabled hexagons are six-sided shelters with a hip and gable roof, cupola, and shown with optional gable circle ornamentation.

GHX 40'

(with gable and clerestory ornamentation, round columns and sarasota railings)
Saugatuck, MI

IRONWOOD

GW I

Additional details page 77



GW I 42'

(with decorative cupola)
Murphy, TX



GW I 42'

(with decorative cupola, diamond ornamentation and round banded columns)
Cleveland, OH

TIARA

TIA

Additional details page 78



TIA 20'
(with custom turned down eave and structural insulated panels)
Las Vegas, NV

HEXAGON

HXE

Additional details page 78



HXE 58'
(with vented cupola)
Metairie, CA



HXE 24'
Frisco, TX



HXE 32'
(with custom clerestory)
Fort Lewis, WA



HXE 20'
(with integrated seating)
Grand Rapids, MI



HXE 40'
(with vented cupola)
Lancaster, CA

MARQUEE

MAR

Additional details page 79



MAR 16'x34'
Camp Lejeune, NC



MAR 30'x64'
(with San Jose columns)
Mt Pleasant, SC



CHE 40'x64'
(with clerestory louvers)
Dallas, TX



CHE 18'x24'
(with custom clerestory gable overhang)
Frisco, TX



CHE 20'x30'
Fort Worth, TX

HIP ROOF

RAM

Additional details page 80



RAM 24'x44'
Fort Worth, TX



RAM 24'x60'
Bridgeton, MO



RAM 24'x34'
Bessemer, AL



RAM 30'x40'
Arvada, CO



RAM 30'x44'
Portsmouth, VA

Hip Roof shelters are available with a single 30' bay or expandable in unlimited 20' bays.



RAM 30'x64'
San Diego, CA

GABLE ROOF

REK

Additional details page 80



REK 50'x64'
Hemet, CA



REK 24'x24'
(with Winchester columns and gable truss ornamentation)
Corona, CA



REK 25'x40'
(with custom roof pitch and gable truss ornamentation)
Arvada, CO





REK 40'x64'
(with decorative cupola)
Riverside, CA

Gable Roof shelters are available with a single 30' bay or expandable in unlimited 20' bays.



REK 30'x44'
Woodland, CA



REK 50'x104'
Pensacola, FL



REK 20'x40'
Apache Junction, AZ

CARNIVAL

CAR

Additional details page 81



CAR 24'
Lake Zurich, IL



CAR 16'
(with Winchester columns)
Riverside, CA



CAR 40'
(with custom turned down eaves and custom column spacing)
Las Vegas, NV



CAR 16'
Lakeland, FL

SQUARE

SQR

Additional details page 81



SQR 24'
Fort Worth, TX



Connection Detail
(Typical frame detail for square model)



SQR 50'
Las Vegas, NV



SQR 20'
Apache Junction, AZ



SQR 36'
(with decorative cupola)
Oklahoma City, OK

SUN SHELTERS

SSG, SSH

Additional details page 82



SSG 8'x9'
(with integrated steel benches)
Coronado, CA

Poligon Sun Shelters are available in Gable Roof and Hip Roof models with the pictured options (as well as the other options shown on page 82)



SSG 8'x9'
(with integrated 100% recycled plastic benches)
Knoxville, TN



SSH 12'x12'
Muskegon, MI



SSG 8'x9'
(with display case)
New Mexico

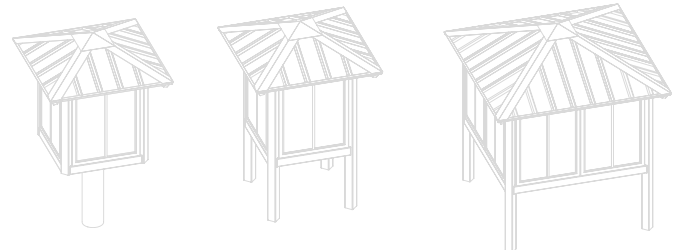
KIOSKS & INFO CENTERS

KSK, IFO

Additional details page 83

Three-sided Kiosks are available in single-column and three-column models.

Four-sided Info Centers are available in single-column, four-column, and double display width four-column models. See line drawings on page 83 for more details.



KSK 3-8
Las Vegas, NV



KSK 3-8
Las Vegas, NV

DUGOUTS

DUG

Additional details page 83



DUG 12'x44'
Worcester, MA

LinkUp dugouts connect directly to chain link fencing
(fencing supplied by others)



DUG 12'x42'
Grapevine, TX

PRIVACY SHELTER

PRV, PLE, PLX

Additional details page 84

Privacy Shelters are available in single, double and handicap size.



PRV-S
Holland, MI



PLX-HC1
(with integrated bench and lexan sides)
Aberdeen, MD



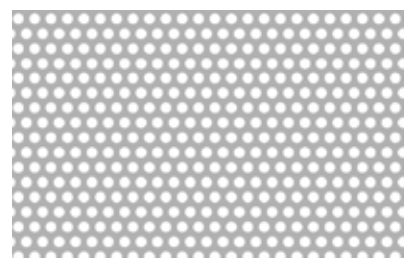
PLE-HC2
Castle Rock, CO

ENCLOSED

Most Polygon shelters can be enclosed or partially enclosed. Material is 16 gauge perforated steel or a 1/4" thick transparent polycarbonate glazing.



Square with Enclosure 20'
Los Angeles, CA



Detail of perforated steel

TRANSIT SHELTERS

Poligon's transit shelters offer endless possibilities. Whether you are looking for a bus shelter, walkway cover, rail station or bike shelter, Poligon has a solution.



Custom Hip Roof
(with polycarbonate wind screens)
Holland, MI



Custom Monoslope
Greenville, NC



Custom Transit Shelter
(with glazing and custom screens)
Charlotte, NC



Custom Gable Roof
Brewster, NY



Custom Hip Roof
(with laser cut screening & text)
Coronado, CA



Custom Hip Roof
(with extended overhangs & perforated steel screens)
Coronado, CA



Custom CHE 15'x31'
East Williston, NY



Custom Transit Shelter
Greenville, NC

parasol[®]
is now

poligon[®]
FABRIC

WWW.POLIGONFABRIC.COM



Sails
Memphis, TN



Cantilever
Elk Grove, CA



Hip Roof
Sacramento, CA



Sundial
(Available with 360° pivoting top)
Madison, WI



Conic
Orillia, ON



Octagon
Las Vegas, NV



Kites
Gainesville, FL



Walkway Cover
St. Pete, FL

Using fabric in combination with our steel frames, Polygon Fabric can create more curves and angles to give your shelter a softer look. We can design an artful structure to fit any site. Fabric options available: High Density Polyethylene (HDPE) breathable UV blocking shade fabric, water resistant solution dyed fabric, and water proof vinyl fabric. Each is available in a variety of colors. Visit our website for the latest products and more information.



Octagon - WOT 30'
Carrollton, GA



Bandshell - WLL 50'
(buildings by others)
Sparta, MI



Gable Roof - WLQ 24'x36'
Sparta, MI



Square - WSQ 28'
Pueblo, CO



Hexagon - WHX 24'
Sarasota, FL



Gable Roof - WLQ
Matthews, NC

The Polygon wood product line has been enhanced to streamline the engineering, manufacturing and distribution of our wood shelters. We have increased the number of options and features available, including stain colors, multiple anchoring systems and a variety of roofing options. Visit our website for more information and product details.

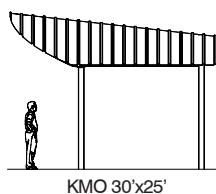
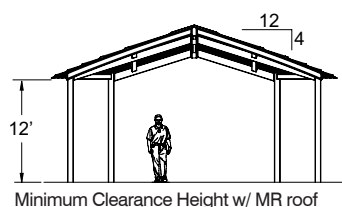
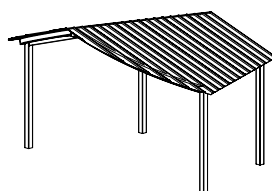
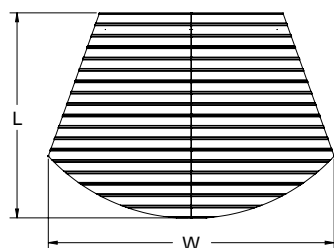
KOKOMO

KMO
(from page 16)

Suggested Sizes

BIN	W	L	SF
KMO	30'	25'	581
KMO	40'	25'	818
KMO	50'	25'	1032

Additional sizes available in 1' increments



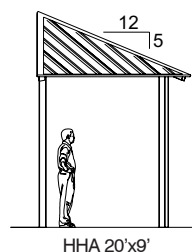
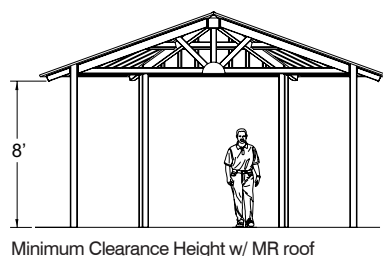
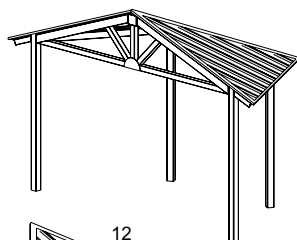
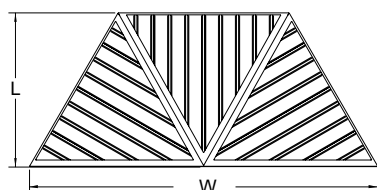
HOUSTON

HHA
(from page 17)

Suggested Sizes

BIN	W	L	SF
HHA	16'	7'	83
HHA	20'	9'	130
HHA	24'	11'	187
HHA	28'	13'	255
HHA	32'	14'	333

Additional sizes available in 1' increments



*Shown with optional truss-style ornamentation

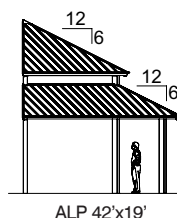
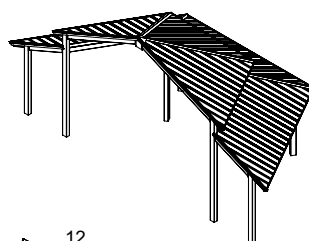
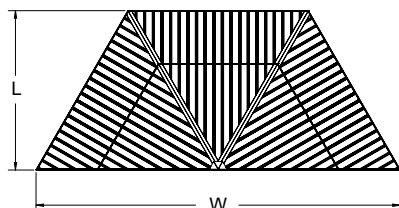
ALPINE

ALP
(from page 17)

Suggested Sizes

BIN	W	L	SF
ALP	42'	19'	581
ALP	57'	25'	1066
ALP	73'	32'	1744

Additional sizes available in 1' increments



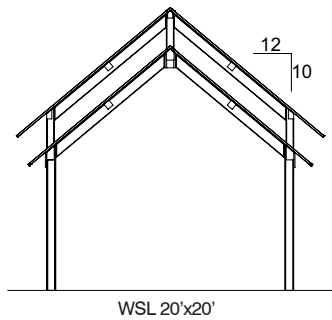
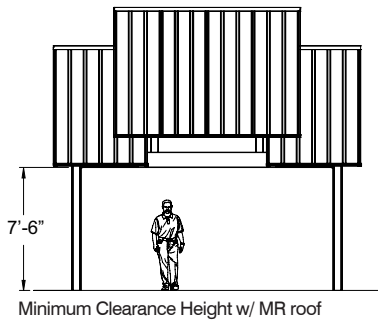
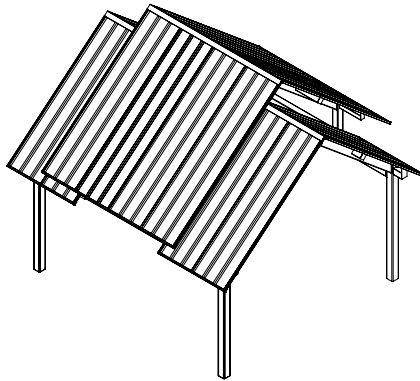
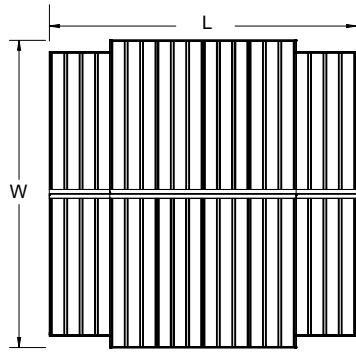
WESTERN SKYLINE

WSL
(from page 18)

Suggested Sizes

BIN	W	L	SF
WSL	14'	14'	180
WSL	20'	20'	380
WSL	28'	28'	760

Additional sizes available in 1' increments



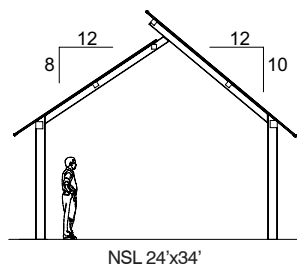
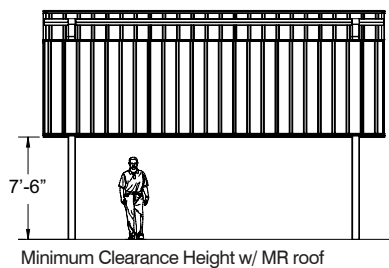
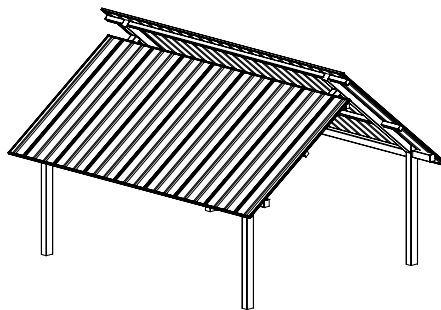
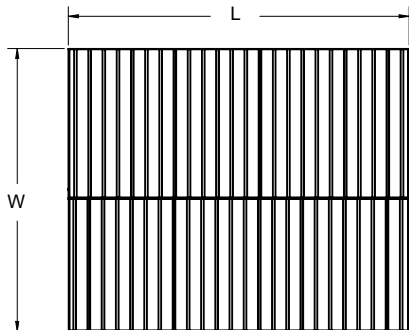
NORTHERN SKYLINE

NSL
(from page 19)

Suggested Sizes

BIN	W	L	# of Columns	SF
NSL	20'	24'	4	480
NSL	24'	34'	4	816
NSL	30'	34'	4	1020
NSL	30'	50'	6	1500

Additional sizes available in 1' increments



NEO CLASSIC OCTAGON

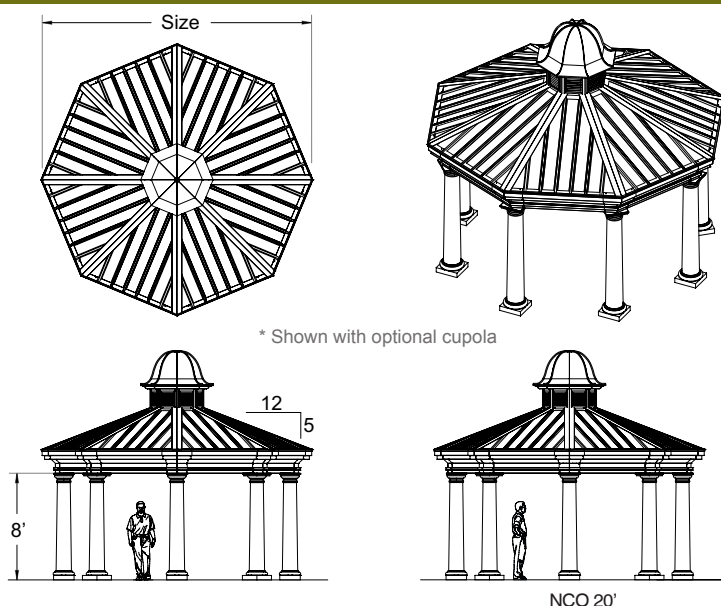
NCO

(from page 20-21)

Suggested Sizes

BIN	Size	SF
NCO	16'	181
NCO	20'	283
NCO	24'	407
NCO	28'	554
NCO	32'	724
NCO	36'	916
NCO	40'	1131

Additional sizes available in 1' increments



NEO CLASSIC HEXAGON

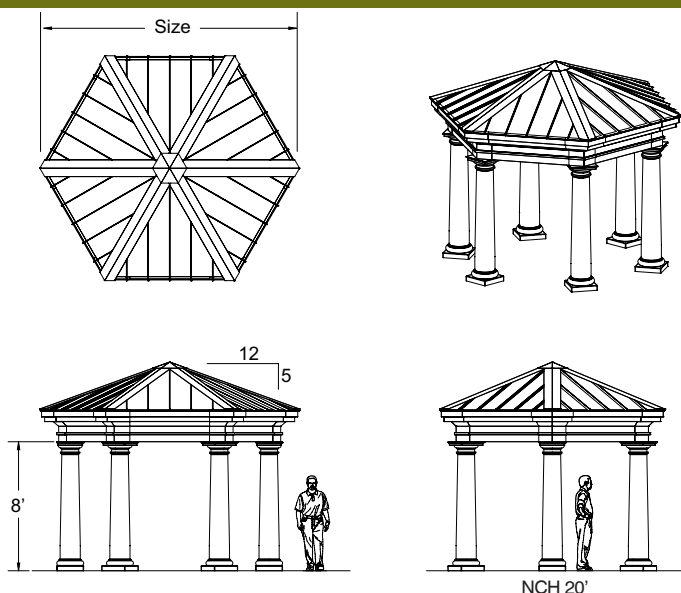
NCH

(from page 20-21)

Suggested Sizes

BIN	Size	SF
NCH	16'	166
NCH	20'	260
NCH	24'	374
NCH	28'	509
NCH	32'	665
NCH	36'	841
NCH	40'	1039

Additional sizes available in 1' increments



NEO CLASSIC HIP ROOF

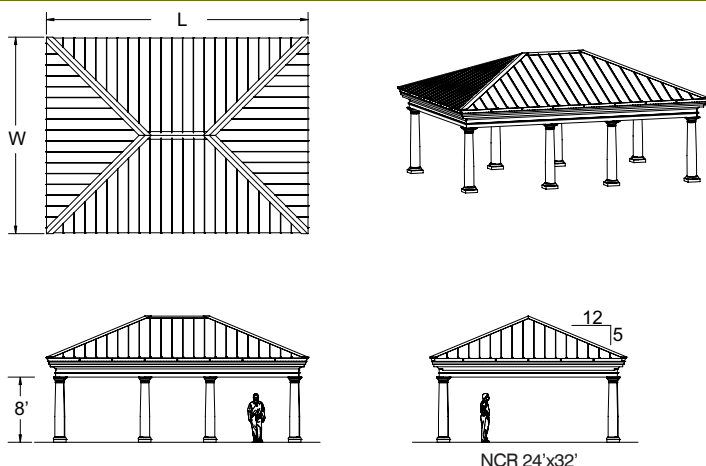
NCR

(from page 20-21)

Suggested Sizes

BIN	W	L	# of Columns	SF
NCR	16'	24'	4	384
NCR	16'	32'	6	512
NCR	20'	24'	4	480
NCR	20'	32'	6	640
NCR	24'	28'	8	672
NCR	24'	32'	8	768

Additional sizes available in 1' increments



NEO CLASSIC GABLE ROOF

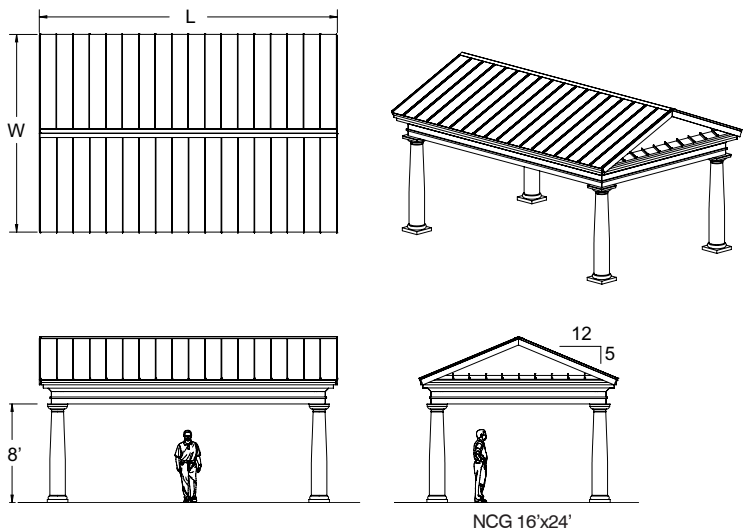
NCG

(from page 20-21)

Suggested Sizes

BIN	W	L	# of Columns	SF
NCG	16'	24'	4	384
NCG	16'	32'	6	512
NCG	20'	24'	4	480
NCG	20'	32'	6	640
NCG	24'	28'	8	672
NCG	24'	32'	8	768

Additional sizes available in 1' increments



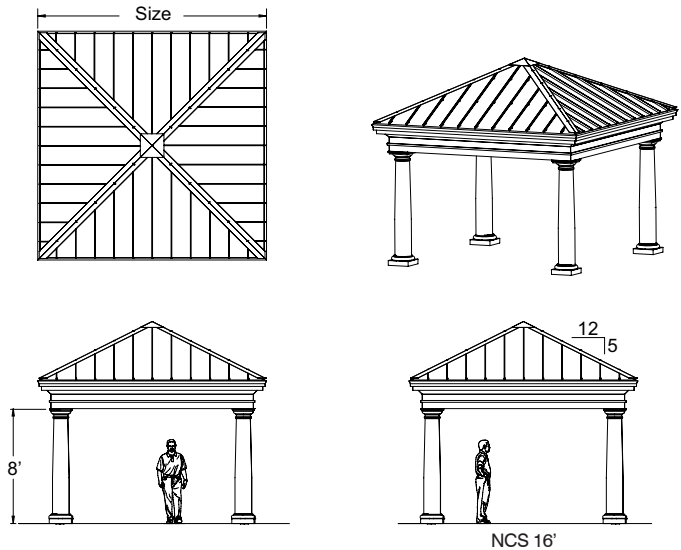
NCS

(from page 20-21)

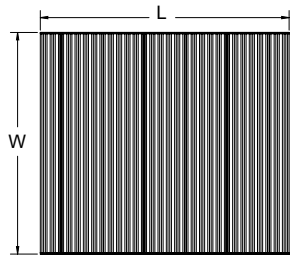
Suggested Sizes

BIN	Size	# of Columns	SF
NCS	16'	4	256
NCS	20'	4	400
NCS	24'	4	576
NCS	30'	8	900

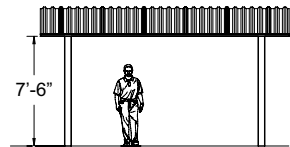
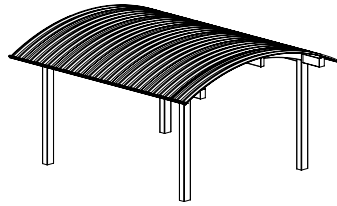
Additional sizes available in 1' increments



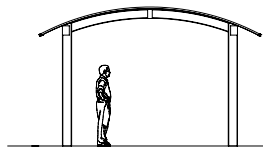
ARCH



Curved rake trim optional



Minimum Clearance Height w/ MG roof



ARC 16'x18'

ARC

(from page 22)

Suggested Sizes

BIN	W	L	# of Columns	SF
ARC	12'	12'	2	144
ARC	16'	18'	4	288
ARC	16'	33'	6	528
ARC	20'	21'	4	420
ARC	20'	30'	6	600
ARC	20'	39'	6	730
ARC	30'	30'	6	900

Additional sizes available

MONOSLOPE

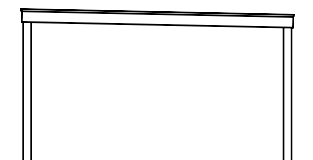
MSL MSE MSX

(from page 22)

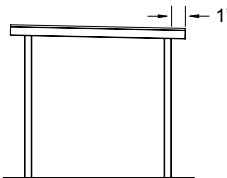
Suggested Sizes

BIN	W	L	SF
MSL	10'	21'	210
MSL	16'	30'	480
MSL	20'	30'	600
MSL	26'	30'	780
MSE	10'	21'	210
MSE	16'	30'	480
MSE	20'	30'	600
MSE	26'	30'	780
MSX	16'	30'	300
MSX	20'	30'	600
MSX	26'	30'	730

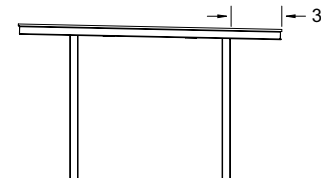
Additional sizes available in 1' increments



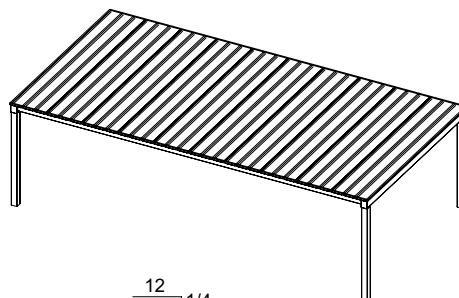
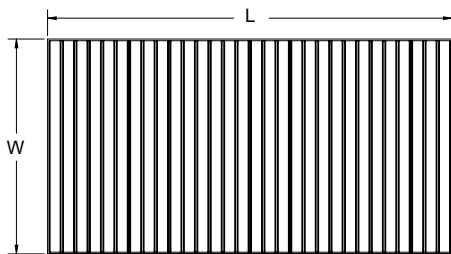
Roof Style #1 - MSL



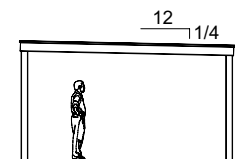
Roof Style #2 - MSE



Roof Style #3 - MSX

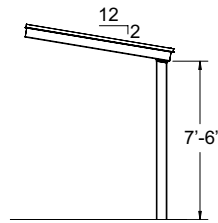
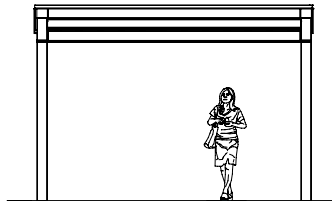
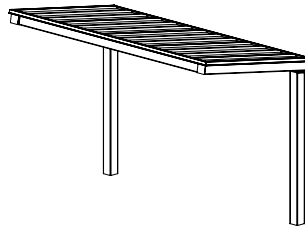
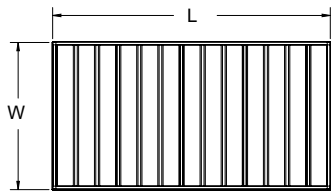


Minimum Clearance Height w/ MR roof



MSL 16'x30'

COVERED WALKWAY CANTILEVERED



CWC 12'

CWC

(from page 23)

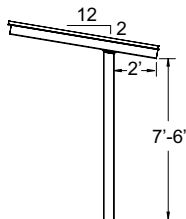
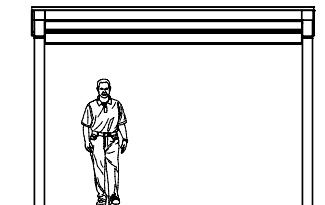
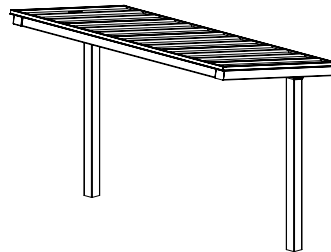
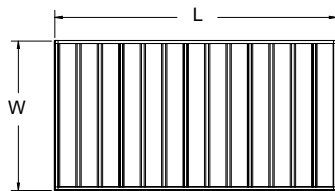
Suggested Sizes

BIN	W	L
CWC	8'	12'
CWC	8'	16'
CWC	8'	20'

Additional sizes available in 1' increments

Covered Walkway shelters are available as a single bay or multiple bay units. The lengths shown here are our optimum bay lengths.

COVERED WALKWAY EXTENDED



CWE 12'

CWE

(from page 23)

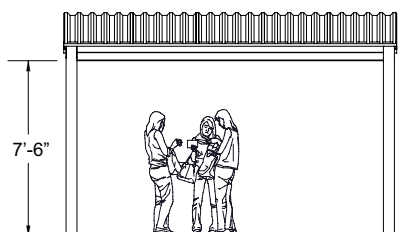
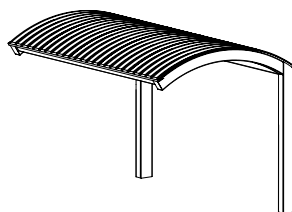
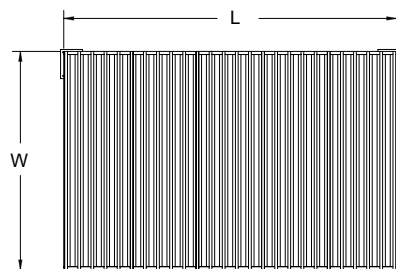
Suggested Sizes

BIN	W	L
CWE	8'	12'
CWE	8'	16'
CWE	8'	20'

Additional sizes available in 1' increments

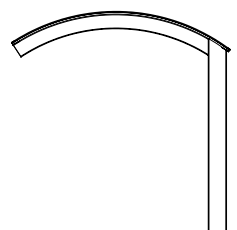
Covered Walkway shelters are available as a single bay or multiple bay units. The lengths shown here are our optimum bay lengths.

COVERED WALKWAY ARCHED



7'-6"

Minimum Clearance Height w/ MG roof



CWA 8'x12'

CWA

(from page 23)

Suggested Sizes

BIN	W	L
CWA	8'	12'
CWA	8'	18'
CWA	8'	24'
CWA	10'	12'
CWA	10'	18'
CWA	10'	24'

Additional sizes available

Covered Walkway shelters are available as a single bay or multiple bay units. The lengths shown here are our optimum bay lengths.

CWA walkways are available with MG roof only. Also available is color matching curved rake trim to give the ends a more finished look. Lengths are best modified in 3' increments.

CROSSING

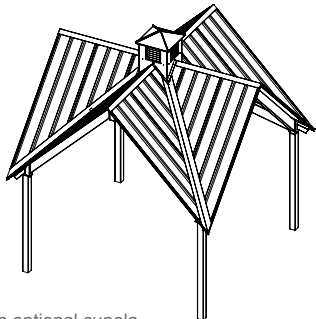
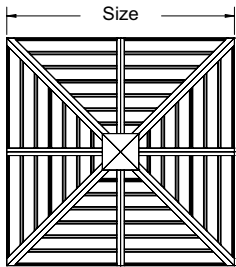
CRS

(from page 24)

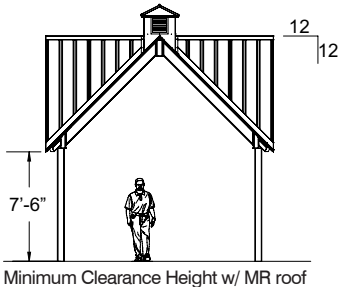
Suggested Sizes

BIN	Size	SF
CRS	12'	144
CRS	16'	256
CRS	20'	400
CRS	24'	576
CRS	30'	900

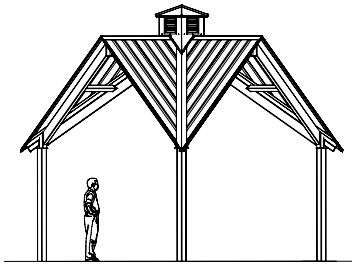
Additional sizes available in 1' increments



* Shown with optional cupola



Minimum Clearance Height w/ MR roof



CRS 16'

NESTED CROSSING/GABLE

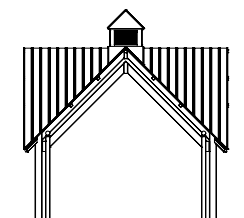
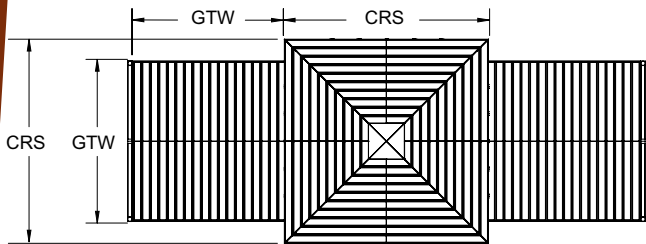
CGN

(from page 25)

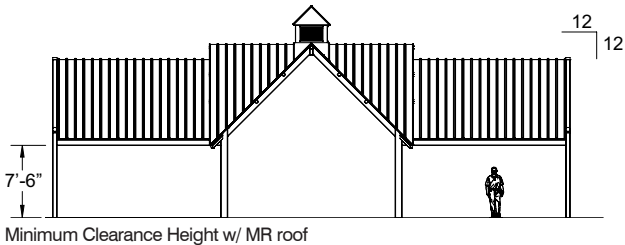
Suggested Sizes

BIN	CRS	GTW	SF
CGN	12'	9'	306
CGN	16'	12'	544
CGN	20'	15'	850
CGN	24'	19'	1298
CGN	30'	23'	1958

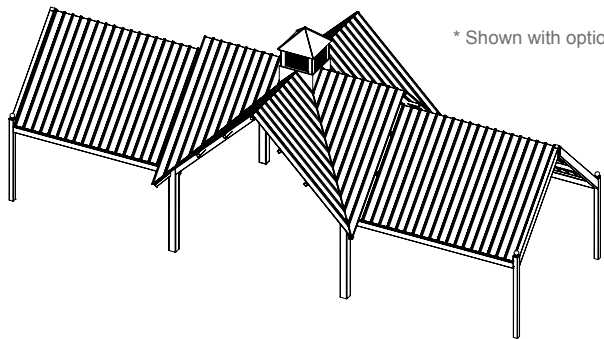
Additional sizes available in 1' increments



CGN 24'x19'



Minimum Clearance Height w/ MR roof



* Shown with optional cupola

PORTAL

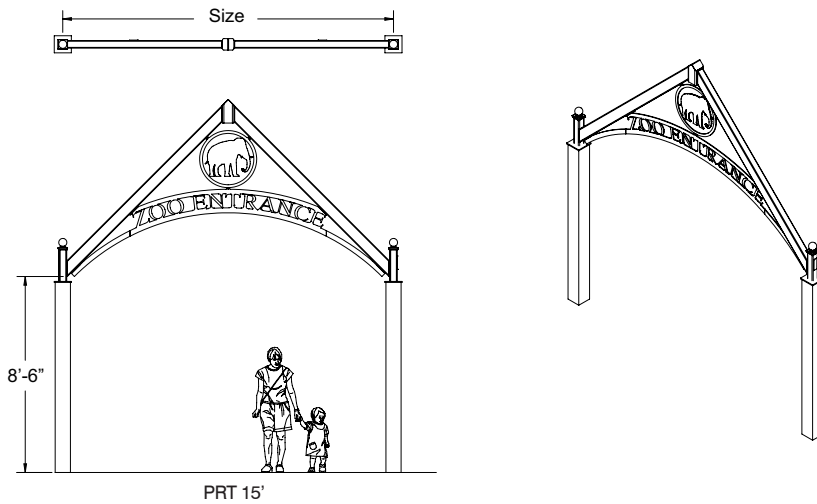
PRT

(from page 26)

Suggested Sizes

BIN	Size	Pitch
PRT	7'	12:12
PRT	11'	12:12
PRT	15'	12:12
PRT	19'	12:12
PRT	23'	10:12

Additional sizes available in 1' increments



PRT 15'

* Shown with optional lettered arch and medallion

All Signs are available in varying heights

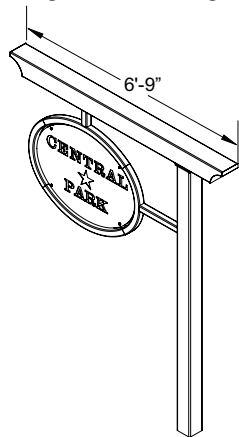
SIGNS

SGA, SGB, SGC

(from page 27)

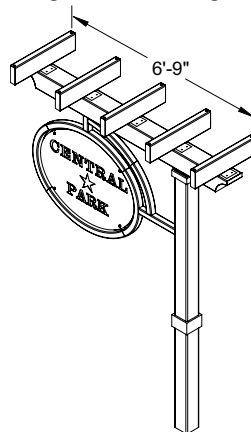
SGA

Single column oval sign



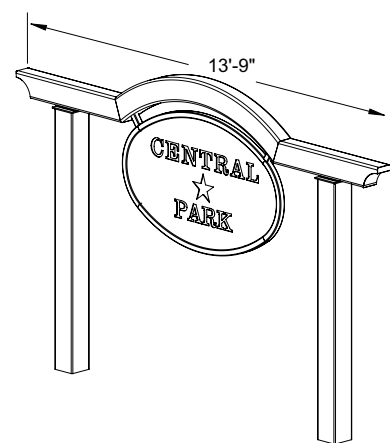
ENHANCED SGA

Single column oval sign



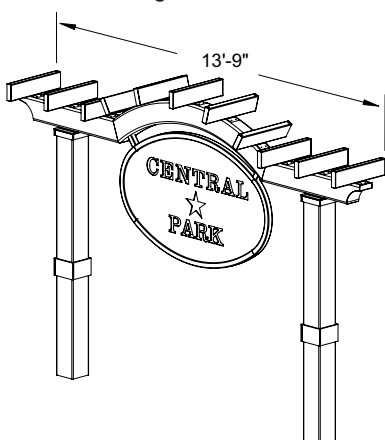
SGB

Double column sign with curved truss



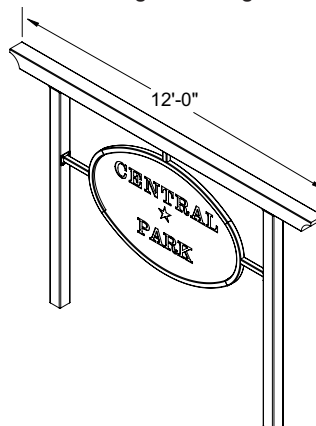
ENHANCED SGB

Double column sign with curved truss and latilla



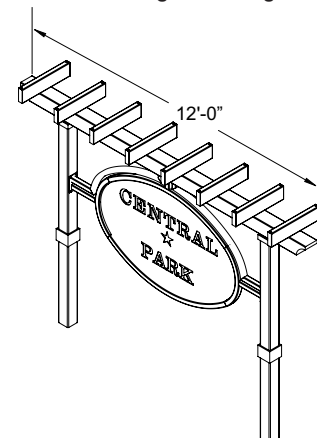
SGC

Double column sign with straight truss



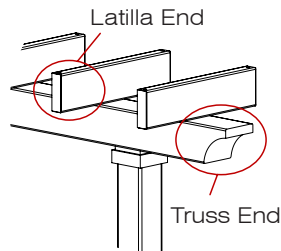
ENHANCED SGC

Double column sign with straight truss



LATILLA & TRUSS OPTIONS FOR SIGNS & TRELLISES

Truss End Options:



Modern O32



Mission O31



Mediterranean O33



Metro O34



Tuscan O35



Architectural O36



Santa Fe O37

Latilla End Options:



Modern O42



Mission O41



Mediterranean O43



Metro O44



Tuscan O45



Architectural O46

CONCORD

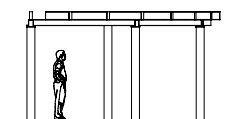
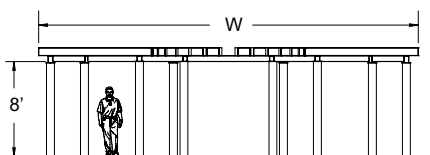
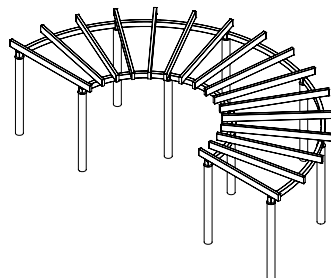
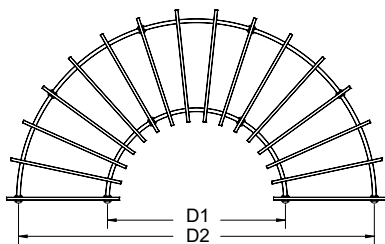
CON

(from page 28)

Suggested Sizes

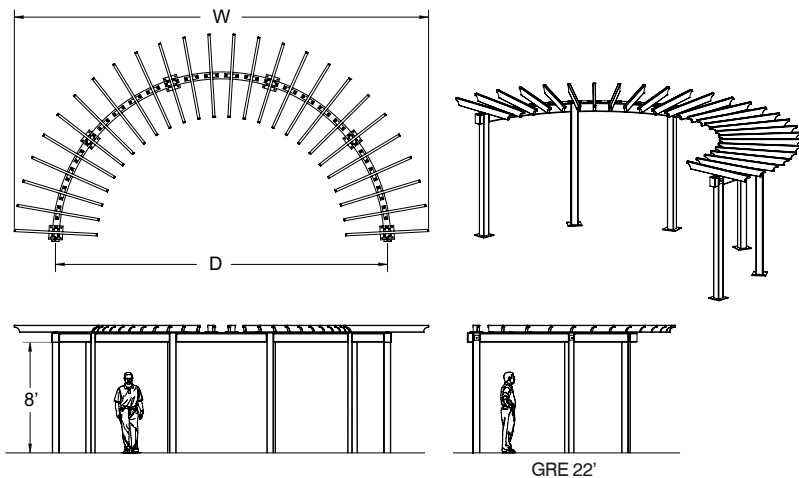
BIN	W	D1	D2	Arc	D1 # of columns	D2 # of columns
CON	22'	12'	20'	180°	4	4
CON	32'	15'	30'	180°	4	6
CON	42'	20'	40'	180°	4	7
CON	52'	25'	50'	180°	5	8

Additional sizes available in 1' increments



CON 32'

GRECO



GRE

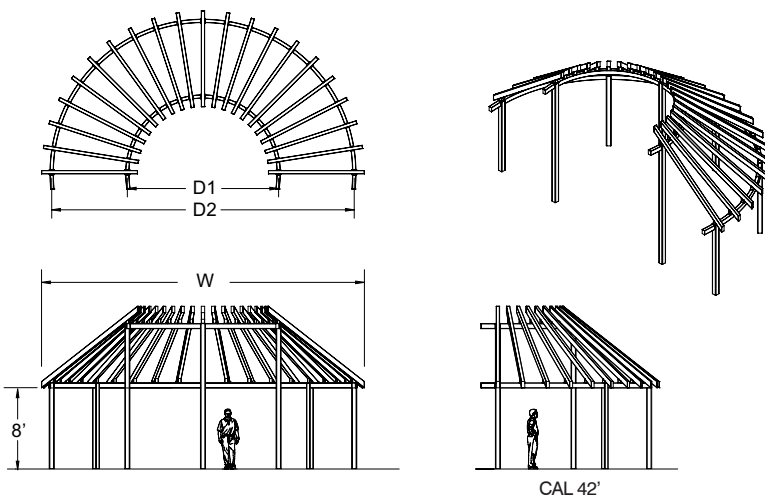
(from page 29)

Suggested Sizes

BIN	W	D	Arc	# of columns
GRE	22'	16'	180°	4
GRE	26'	20'	180°	5
GRE	30'	30'	180°	6

Additional sizes available in 1' increments

CALMERIA



CAL

(from page 29)

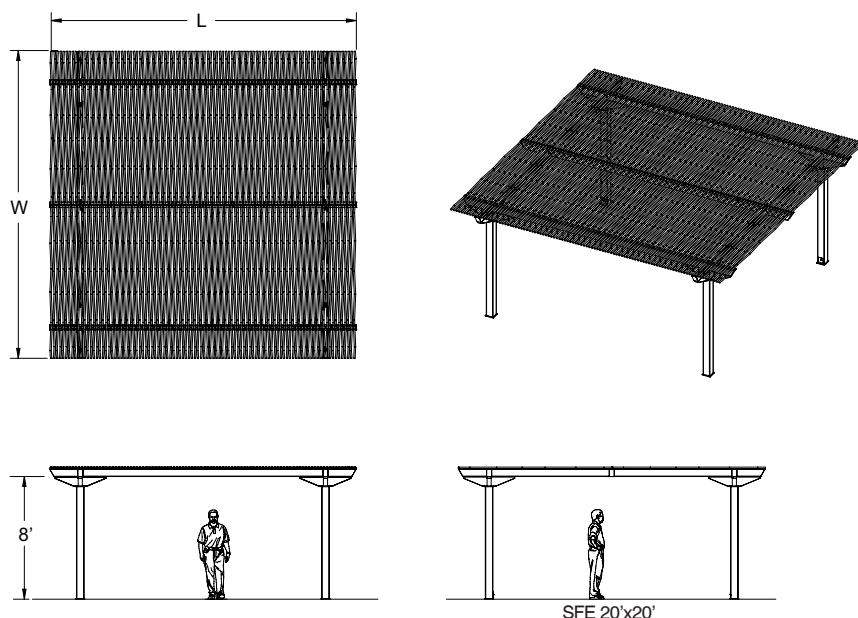
Suggested Sizes

BIN	W	D1	D2	Arc	D1 # of columns	D2 # of columns
CAL	32'	12.5'	30'	180	3	5
CAL	42'	20'	40'	180	4	5
CAL	52'	30'	50'	180	5	6

Additional sizes available in 1' increments

Pitch can be varied to suit

SANTA FE



SFE

(from page 30)

Suggested Sizes

BIN	W	L	# of Columns
SFE	10'	10'	4
SFE	10'	20'	4
SFE	10'	30'	6
SFE	10'	40'	6
SFE	20'	20'	4
SFE	20'	30'	6
SFE	20'	40'	6

Additional sizes available in 1' increments

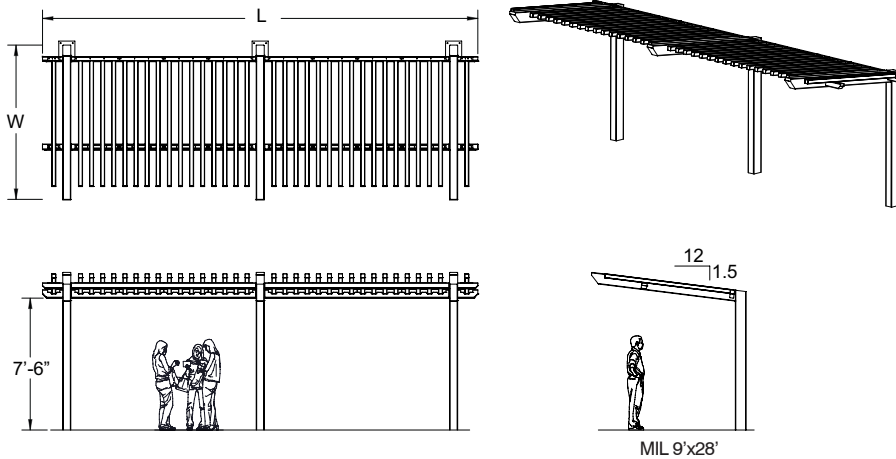
MILLENNIUM TRELLIS

MIL
(from page 31)

Suggested Sizes

BIN	W	L	SF
MIL	9'	16'	144
MIL	9'	28'	252
MIL	9'	40'	360

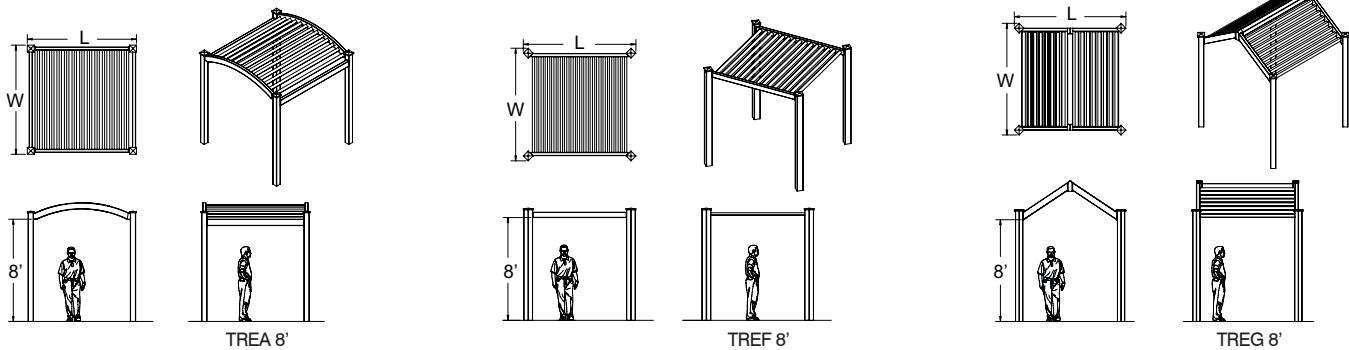
Additional sizes available in 1' increments



Basic Trellises can be combined into various configurations and are available in multiple bays

BASIC TRELLIS

TREA, TREF, TREG
(from page 31)



Suggested Sizes

BIN	W	L	SF
TREA	8'	8'	64
TREA	8'	10'	80
TREA	8'	12'	96

Additional sizes available in 1' increments

Suggested Sizes

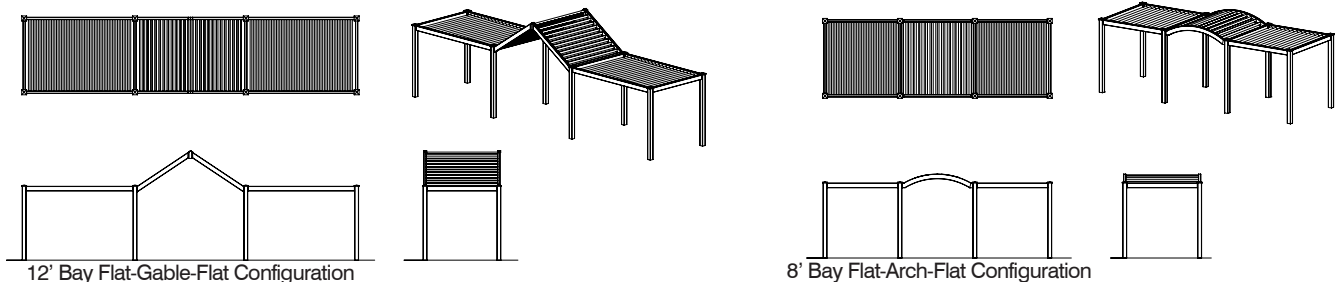
BIN	W	L	SF
TREF	8'	8'	64
TREF	8'	10'	80
TREF	8'	12'	96

Additional sizes available in 1' increments

Suggested Sizes

BIN	W	L	SF
TREG	8'	8'	64
TREG	8'	10'	80
TREG	8'	12'	96

Additional sizes available in 1' increments



CLERESTORY PAVILION

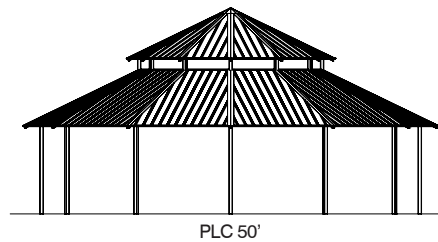
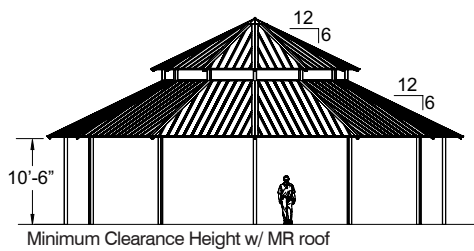
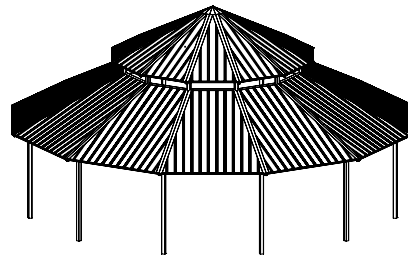
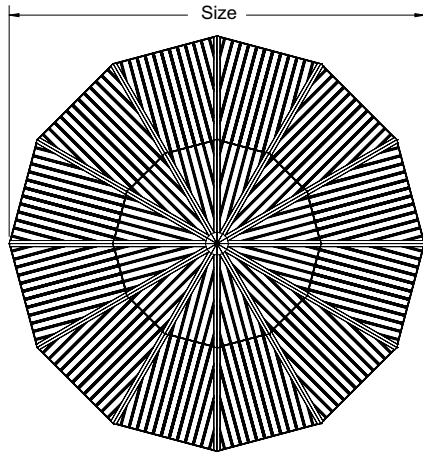
PLC

(from page 32)

Suggested Sizes

BIN	Size	SF
PLC	50'	1875
PLC	60'	2700
PLC	66'	3267
PLC	72'	3888
PLC	86'	5547

Additional sizes available in 1' increments



PAVILION

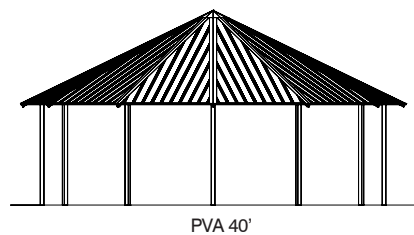
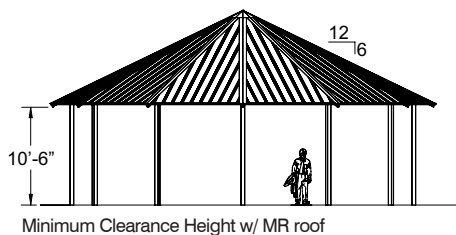
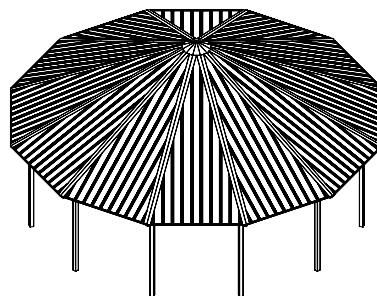
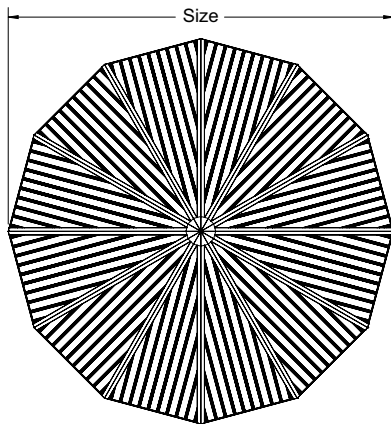
PVA

(from page 33)

Suggested Sizes

BIN	Size	SF
PVA	40'	1200
PVA	50'	1875
PVA	60'	2700
PVA	66'	3267
PVA	72'	3888
PVA	86'	5547

Additional sizes available in 1' increments



GRAND CARMEL

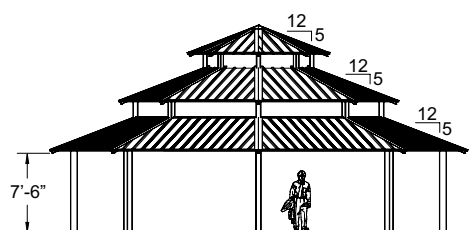
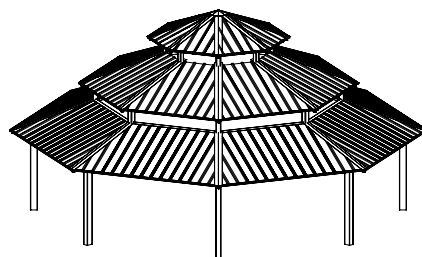
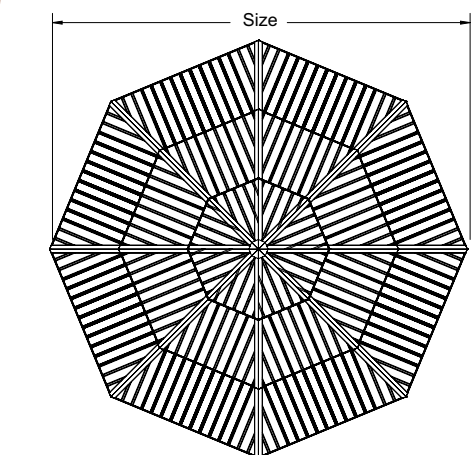
GCO3

(from page 34)

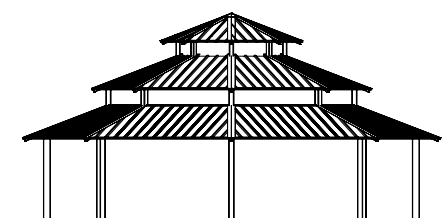
Suggested Sizes

BIN	Size	SF
GCO3	40'	1131
GCO3	48'	1629
GCO3	58'	2379

Additional sizes available in 1' increments



Minimum Clearance Height w/ MR roof



GCO3 40'

CARMEL

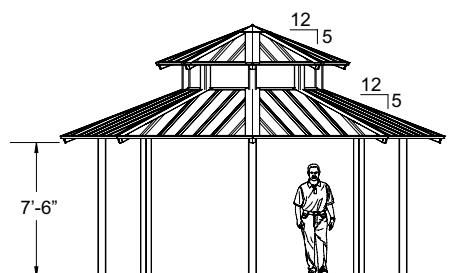
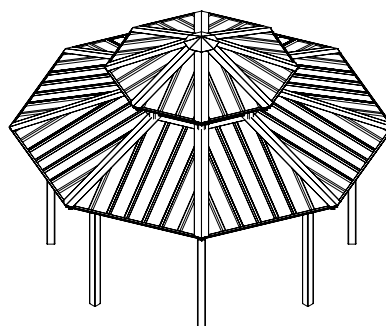
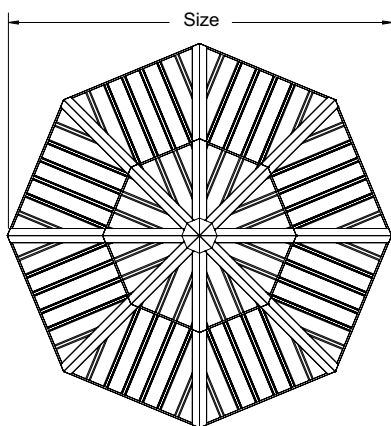
GCO2

(from page 35)

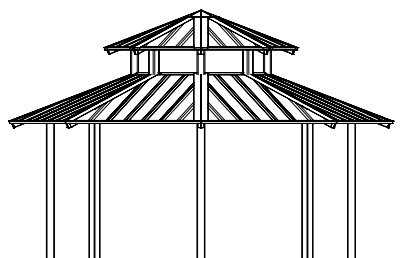
Suggested Sizes

BIN	Size	SF
GCO2	20'	283
GCO2	24'	407
GCO2	28'	554
GCO2	32'	724

Additional sizes available in 1' increments



Minimum Clearance Height w/ MR roof



GCO2 20'

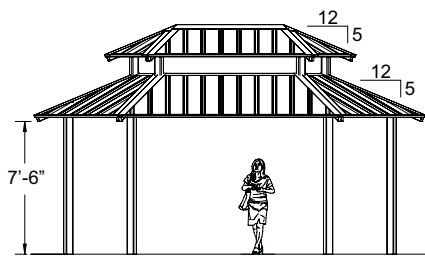
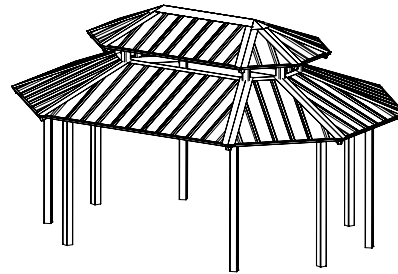
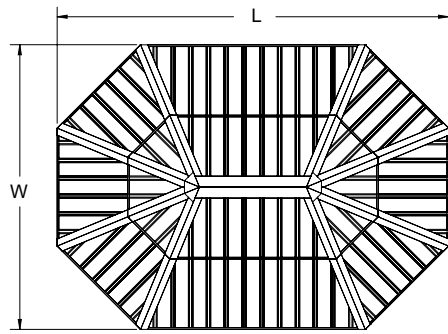
MAC

(from page 36)

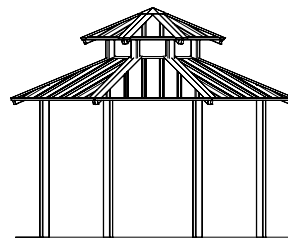
Suggested Sizes

BIN	W	L	SF
MAC	15'	21'	249
MAC	16'	22'	277
MAC	20'	29'	463
MAC	25'	36'	717
MAC	25'	50'	1067
MAC	30'	43'	1026

Additional sizes available in 1' increments



Minimum Clearance Height w/ MR roof



MAC 16'x22'

OCTAGON

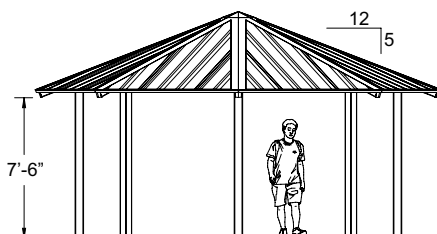
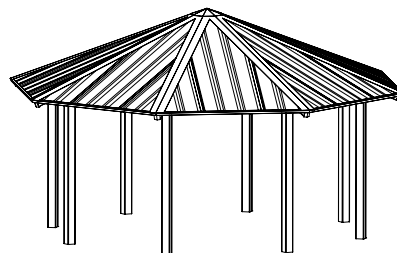
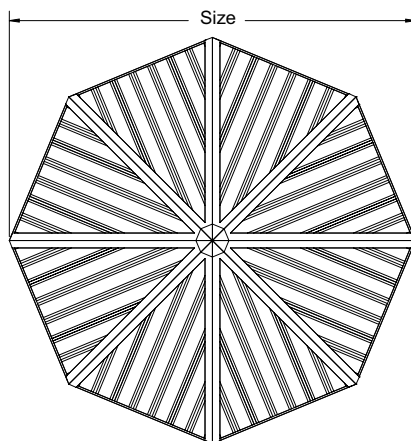
OTC

(from page 36-37)

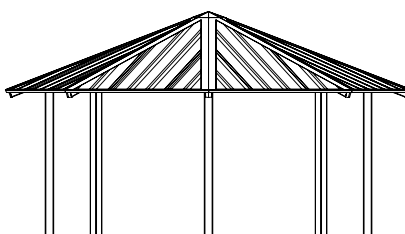
Suggested Sizes

BIN	Size	SF
OTC	16'	181
OTC	20'	283
OTC	24'	407
OTC	28'	554
OTC	32'	724
OTC	40'	1131
OTC	48'	1629
OTC	58'	2379
OTC	64'	2896

Additional sizes available in 1' increments



Minimum Clearance Height w/ MR roof



OTC 20'

DELUXE OXFORD

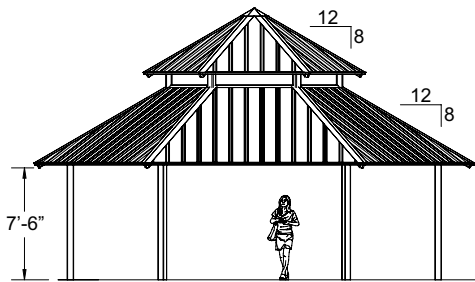
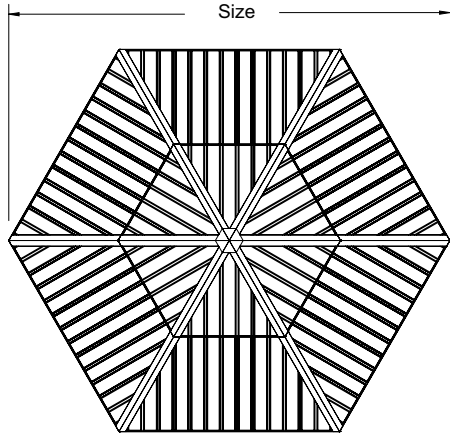
GXO2

(from page 38)

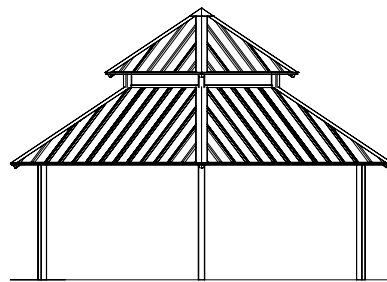
Suggested Sizes

BIN	Size	SF
GXO2	24'	374
GXO2	28'	509
GXO2	32'	665
GXO2	40'	1039
GXO2	48'	1496
GXO2	58'	2185
GXO2	64'	2660
GXO2	76'	3752

Additional sizes available in 1' increments



Minimum Clearance Height w/ MR roof



GXO2 28'

OXFORD

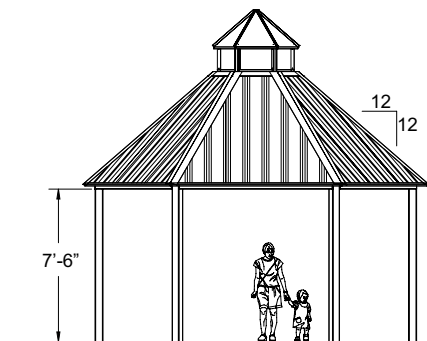
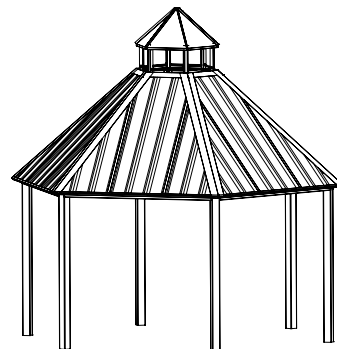
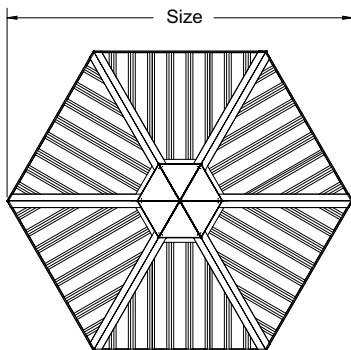
GXO

(from page 38)

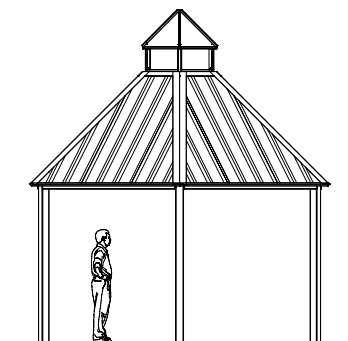
Suggested Sizes

BIN	Size	SF
GXO	14'	127
GXO	18'	210
GXO	22'	314

Additional sizes available in 1' increments



Minimum Clearance Height w/ MR roof



GXO 18'

Functional cupola without ornamentation included in base price of GXO

GRAND HAVEN

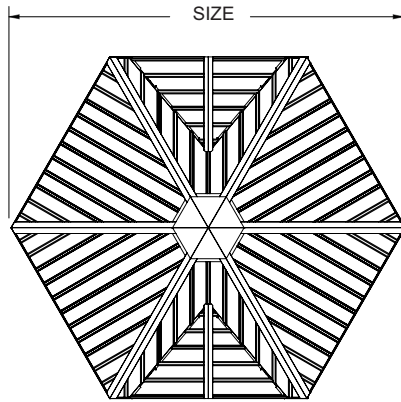
GHX

(from page 39)

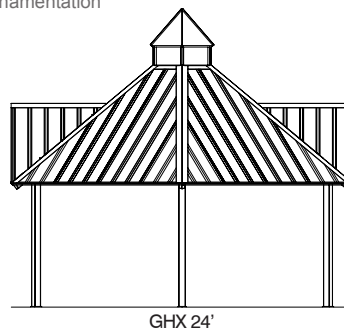
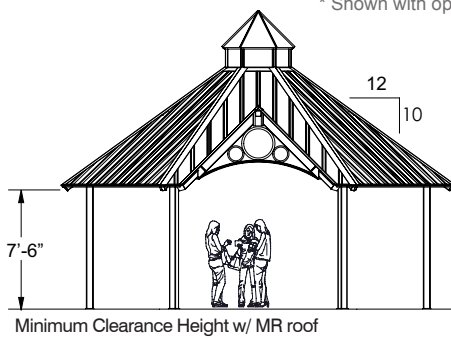
Suggested Sizes

BIN	Size	SF
GHX	24'	374
GHX	28'	509
GHX	32'	665

Additional sizes available in 1' increments



* Shown with optional gable ornamentation



GHX 24'

IRONWOOD

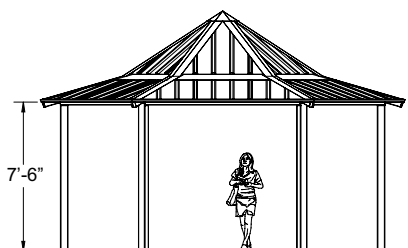
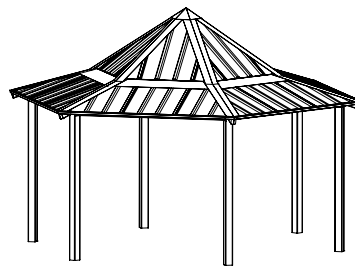
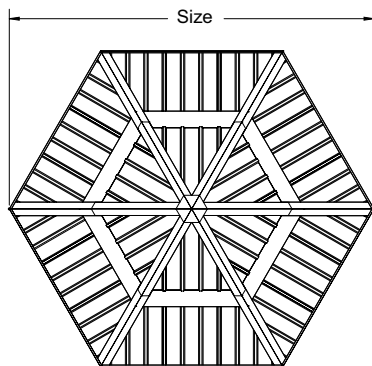
GW

(from page 39)

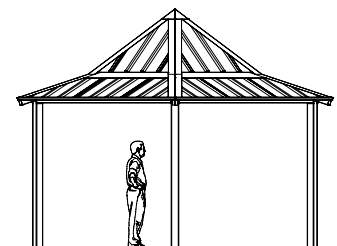
Suggested Sizes

BIN	Size	Lower Pitch	Upper Pitch	SF
GW	14'	4:12	9:12	127
GW	16'	4:12	9:12	166
GW	20'	4:12	9:12	260
GW	24'	4:12	9:12	374
GW	34'	4:12	8:12	751
GW	42'	4:12	8:12	1146
GW	46'	4:12	8:12	1374
GW	60'	4:12	8:12	2338

Additional sizes available in 1' increments



Minimum Clearance Height w/ MR roof



GW 20'

TIARA

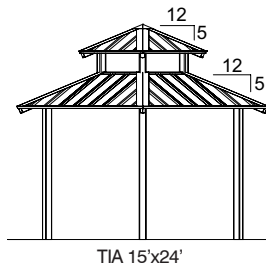
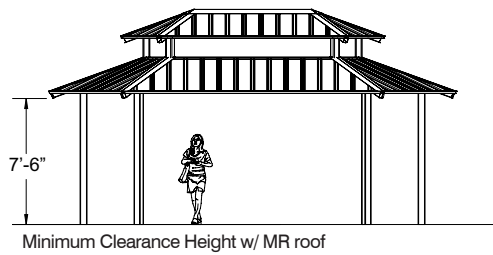
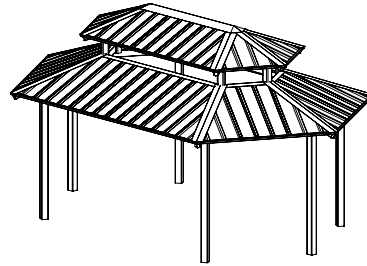
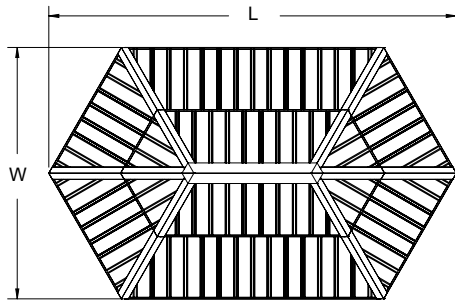
TIA

(from page 40)

Suggested Sizes

BIN	W	L	SF
TIA	15'	24'	300
TIA	17'	26'	375
TIA	20'	29'	500
TIA	25'	37'	781
TIA	30'	44'	1125
TIA	31'	46'	1214
TIA	35'	51'	1531

Additional sizes available in 1' increments



HEXAGON

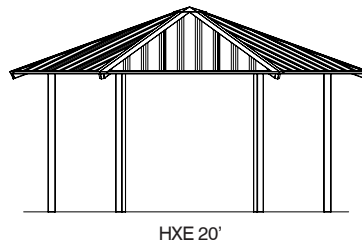
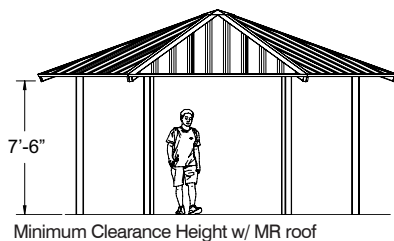
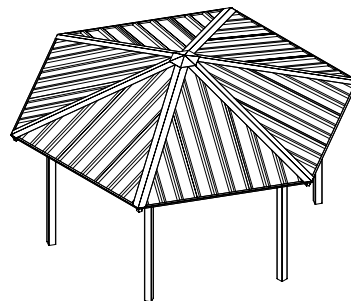
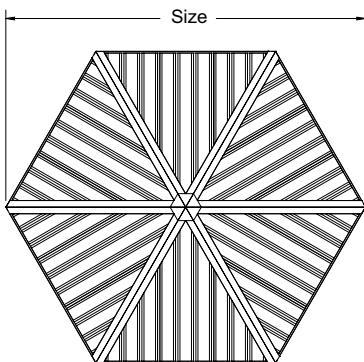
HXE

(from page 40-41)

Suggested Sizes

BIN	Size	Pitch	SF
HXE	16'	5:12	166
HXE	20'	5:12	260
HXE	24'	5:12	374
HXE	28'	5:12	509
HXE	32'	3.5:12	665
HXE	36'	3.5:12	842
HXE	40'	3.5:12	1039
HXE	48'	3.5:12	1496
HXE	58'	3.5:12	2185
HXE	64'	3.5:12	2660

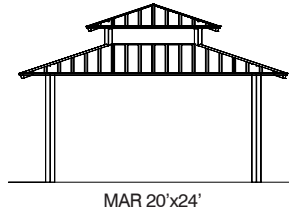
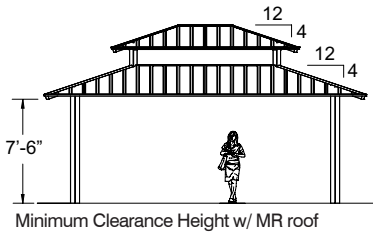
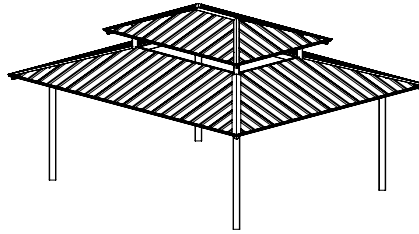
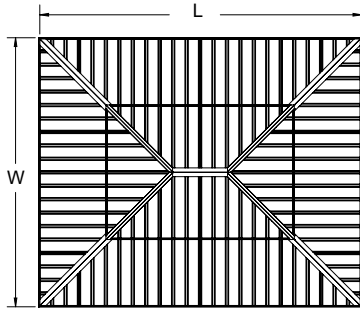
Additional sizes available in 1' increments



MARQUEE

MAR

(from page 42)



Suggested Sizes

BIN	W	L	# of Columns	SF
MAR	14'	24'	4	336
MAR	20'	24'	4	480
MAR	24'	34'	4	816
MAR	30'	34'	4	1020
MAR	40'	44'	8	1760

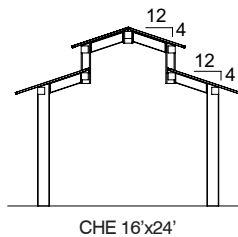
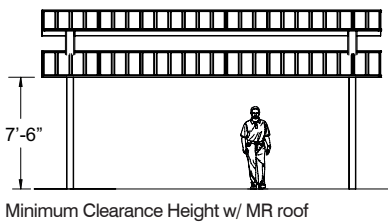
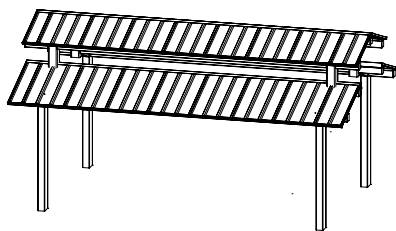
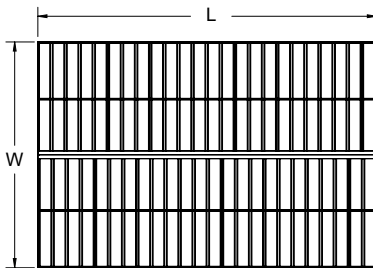
Additional sizes available in 1' increments

Marquee can also be manufactured in multiple bays

CHELSEA

CHE

(from page 43)



Suggested Sizes

BIN	W	L	# of Columns	SF
CHE	16'	24'	4	384
CHE	16'	34'	4	544
CHE	20'	24'	4	480
CHE	20'	34'	4	680
CHE	24'	34'	4	816
CHE	24'	44'	6	1056
CHE	24'	64'	8	1536
CHE	30'	34'	6	1020
CHE	30'	44'	6	1320

Additional sizes available in 1' increments

Chelsea can also be manufactured in multiple bays

HIP ROOF

RAM

(from page 44-45)

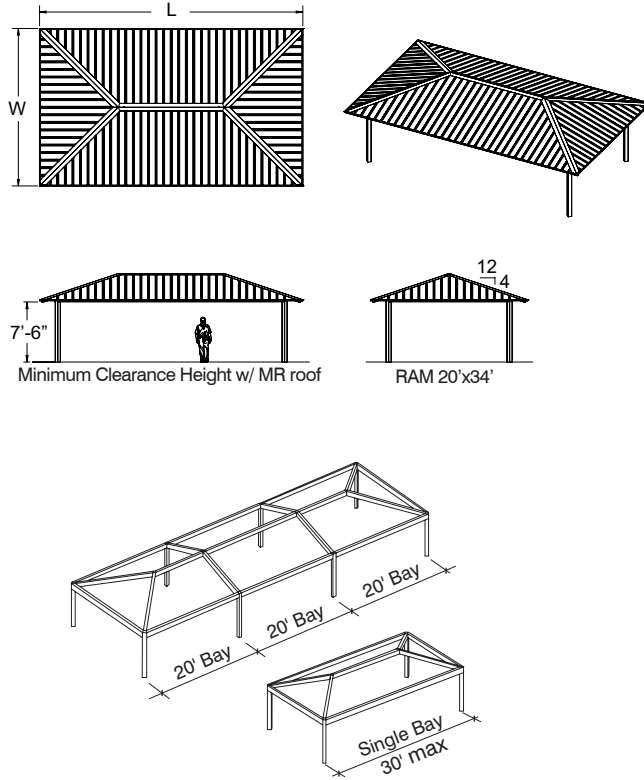
Suggested Sizes

BIN	W	L	SF
RAM	8'	12'	96
RAM	8'	20'	160
RAM	8'	28'	224
RAM	12'	18'	216
RAM	12'	22'	264
RAM	12'	32'	384
RAM	12'	42'	504
RAM	16'	24'	384
RAM	16'	34'	544
RAM	16'	44'	704
RAM	16'	64'	1024
RAM	20'	24'	480
RAM	20'	34'	680
RAM	20'	44'	880
RAM	24'	34'	816
RAM	24'	44'	1056
RAM	24'	64'	1536
RAM	24'	84'	2016
RAM	24'	104'	2496

BIN	W	L	SF
RAM	30'	34'	1020
RAM	30'	44'	1320
RAM	30'	64'	1920
RAM	30'	84'	2520
RAM	30'	104'	3120
RAM	40'	44'	1760
RAM	40'	64'	2560
RAM	40'	84'	3360
RAM	40'	104'	4160
RAM	50'	64'	3200
RAM	50'	70'	3500
RAM	50'	90'	4500
RAM	50'	110'	5500

Additional sizes available in 1' increments

Hip Roof shelters are available with a single 30' bay or expandable in unlimited 20' bays, including the suggested standard lengths listed in the tables.



GABLE ROOF

REK

(from page 46-47)

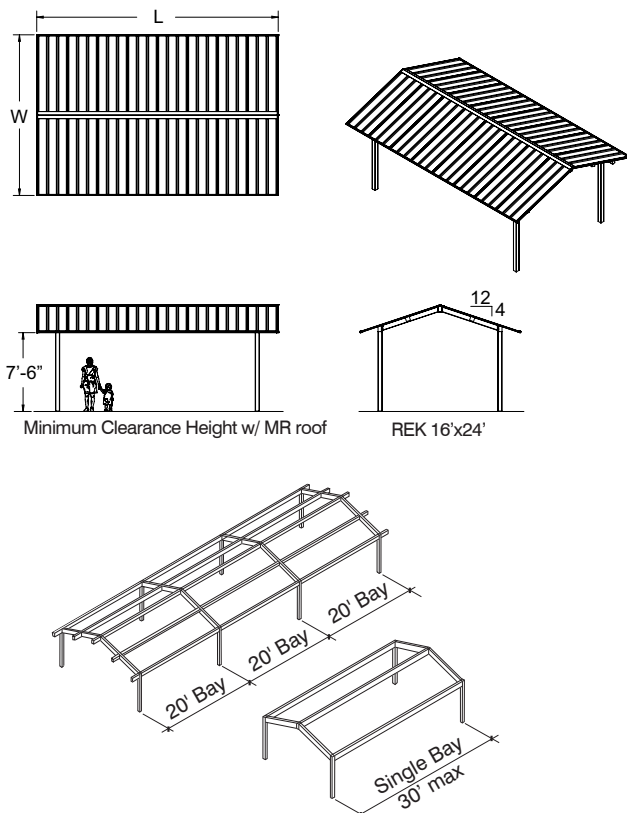
Suggested Sizes

BIN	W	L	SF
REK	8'	9'	72
REK	8'	16'	128
REK	8'	24'	192
REK	16'	24'	384
REK	16'	34'	544
REK	16'	44'	704
REK	16'	64'	1024
REK	20'	24'	480
REK	20'	34'	680
REK	20'	44'	880
REK	20'	64'	1280
REK	24'	24'	576
REK	24'	34'	816
REK	24'	44'	1056
REK	24'	64'	1536
REK	24'	84'	2016

BIN	W	L	SF
REK	30'	34'	1020
REK	30'	44'	1320
REK	30'	64'	1920
REK	30'	84'	2520
REK	30'	104'	3120
REK	40'	44'	1760
REK	40'	64'	2560
REK	40'	84'	3360
REK	40'	104'	4160
REK	50'	64'	3200
REK	50'	84'	4200
REK	50'	104'	5200

Additional sizes available in 1' increments

Gable Roof shelters are available with a single 30' bay or expandable in unlimited 20' bays, including the suggested standard lengths listed in the tables.



CARNIVAL

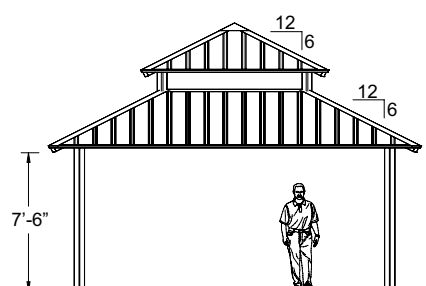
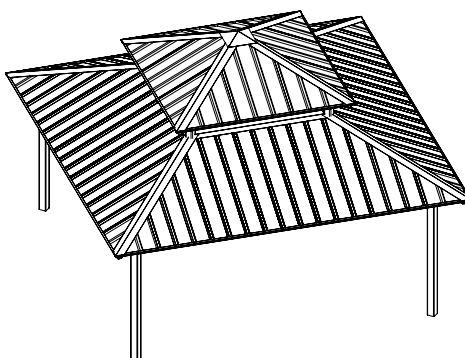
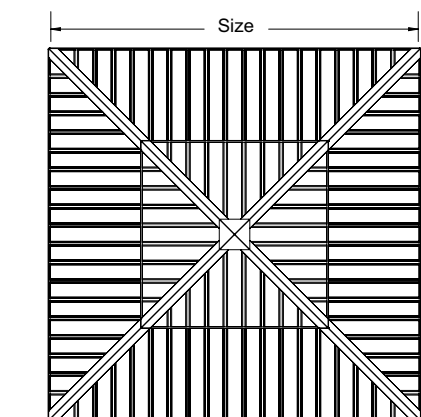
CAR

(from page 48-49)

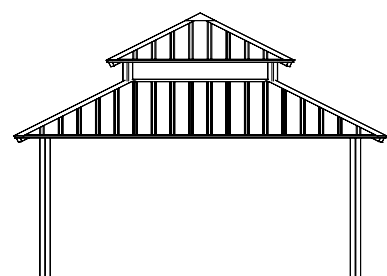
Suggested Sizes

BIN	Size	# of Columns	SF
CAR	16'	4	256
CAR	20'	4	400
CAR	24'	4	576
CAR	30'	4	900
CAR	40'	8	1600

Additional sizes available in 1' increments



Minimum Clearance Height w/ MR roof



CHE 16'x24'

SQUARE

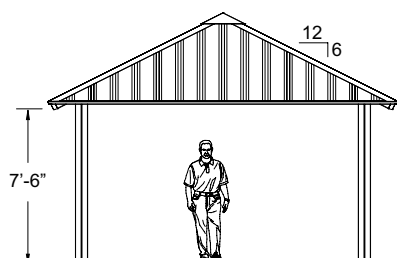
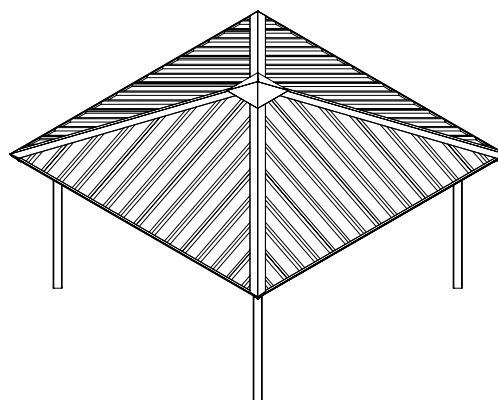
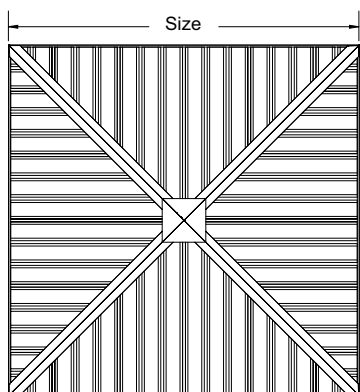
SQR

(from page 50-51)

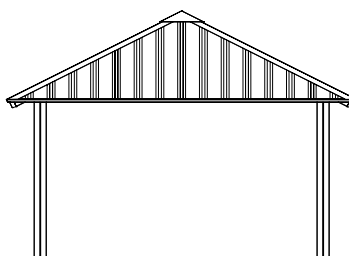
Suggested Sizes

BIN	Size	# of Columns	SF
SQR	12'	4	144
SQR	16'	4	256
SQR	20'	4	400
SQR	24'	4	576
SQR	30'	4	900
SQR	36'	4	1296
SQR	40'	8	1600
SQR	50'	8	2500

Additional sizes available in 1' increments



Minimum Clearance Height w/ MR roof



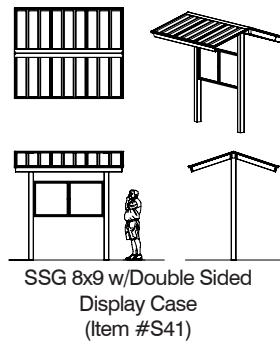
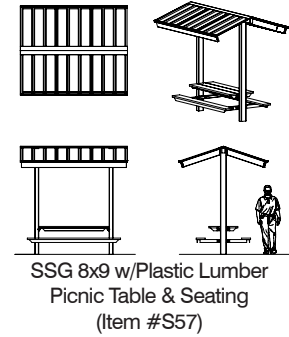
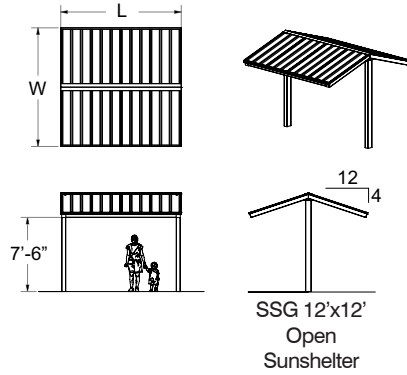
SQR 16'

GABLE ROOF SUN SHELTERS

SSG

(from page 52)

BIN	W	L
SSG	8'	9'
SSG	12'	12'

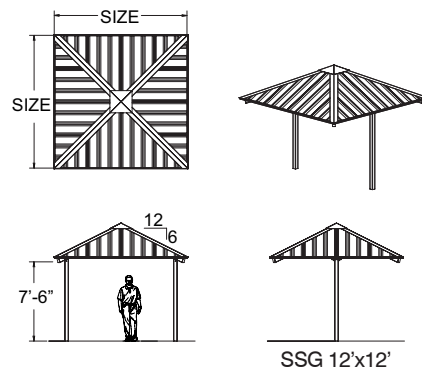


HIP ROOF SUN SHELTERS

SSH

(from page 52)

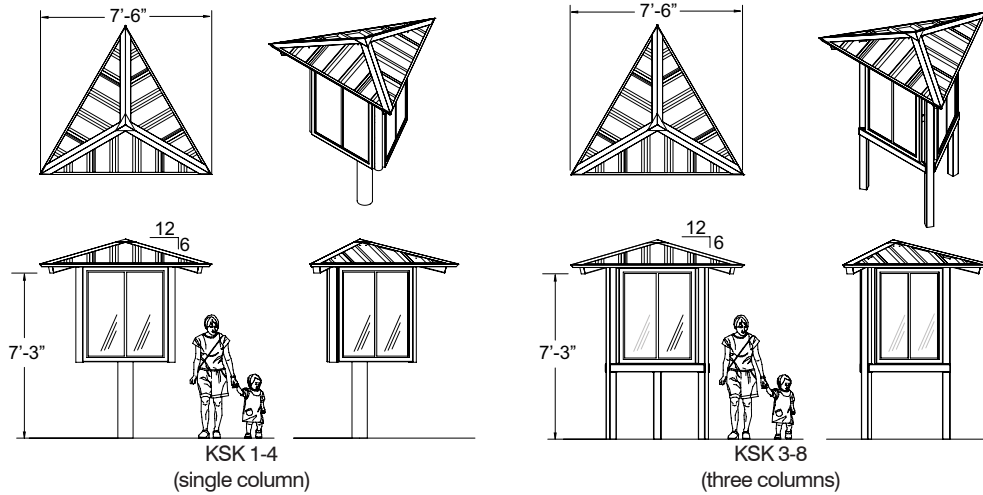
BIN	Size
SSH	10'
SSH	12'



Hip Roof Sun Shelters are available with the same options as Gable Roof Sun Shelters above, excluding display case.

KIOSK

Three-sided Kiosks are available in single-column and three-column models.



KSK

(from page 53)

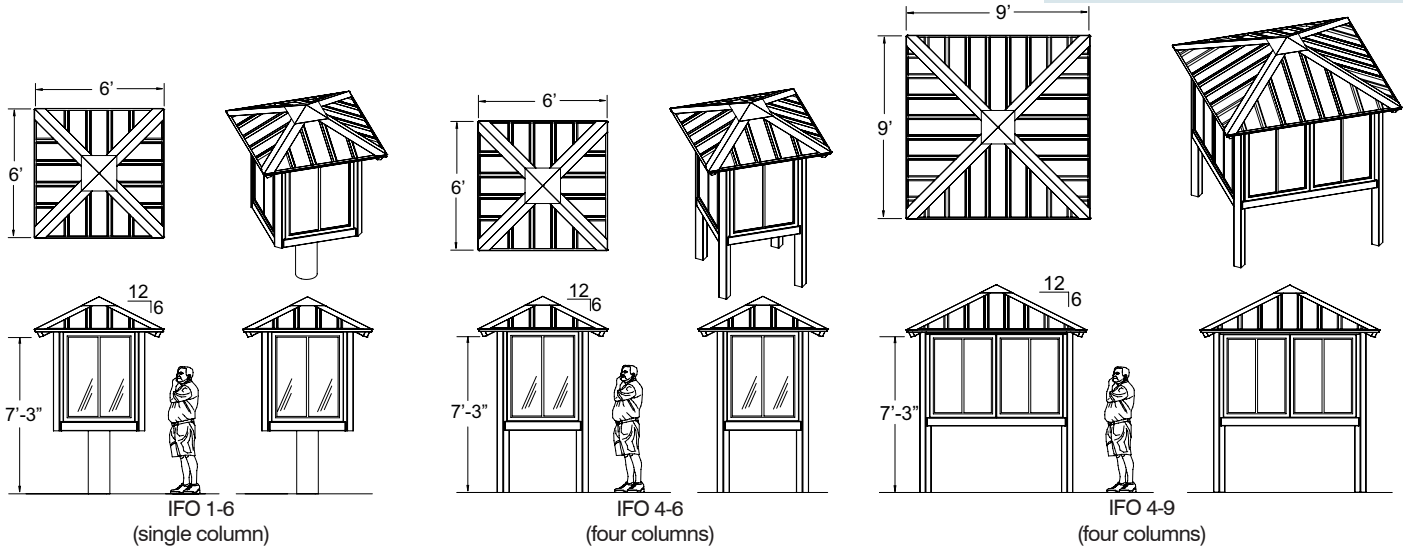
Kiosks are equipped with weather resistant enclosed display cases with clear anodized aluminum frame, lockable door with full length hinged and shatter resistant window. Full size interior tackable display board.

INFO STATION

IFO

(from page 53)

Four-sided Info Centers are available in single-column, four-column and double display width four-column models.



DUGOUT

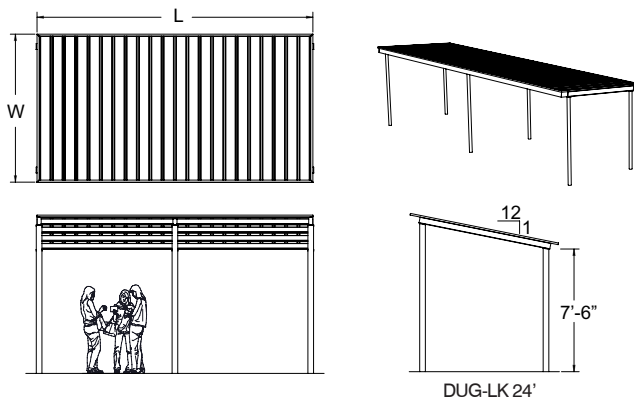
DUG

(from page 54)

Suggested Sizes

BIN	W	L
DUG	10'	12'
DUG	10'	16'
DUG	10'	24'
DUG	10'	32'
DUG	10'	36'
DUG	10'	48'

Additional sizes available in 1' increments



LinkUps use 3" schedule pipe columns that can be integrated with typical chain link fencing

PRIVACY SHELTER

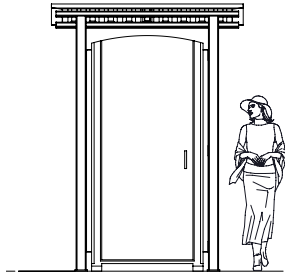
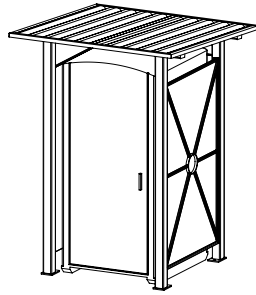
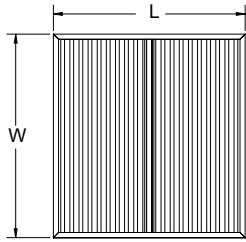
PRV, PLE, PLX

(from page 55)

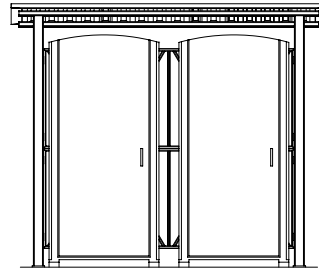
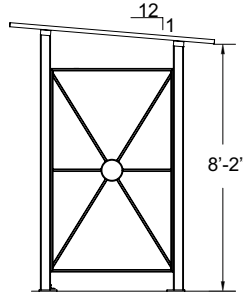
Suggested Sizes

BIN	W	L
PRV-S	6'-8"	6'-3"
PRV-D	6'-8"	10'-6"
PRV-H	8'	7'-6"

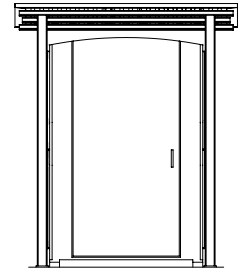
Additional sizes available in 1' increments



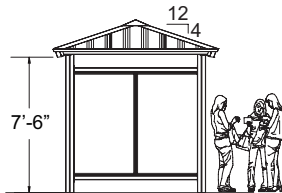
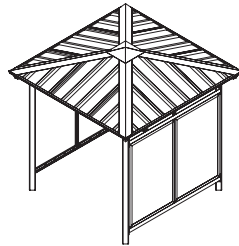
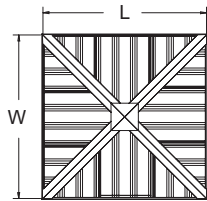
Single Privacy Shelter (PRV-S)



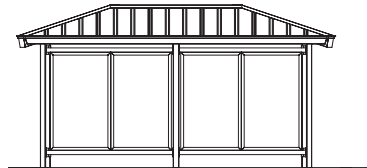
Double Privacy Shelter (PRV-D)



Handicap Privacy Shelter (PRV-H)



PLE-HC1



PLE-HC2

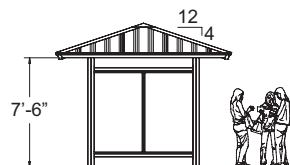
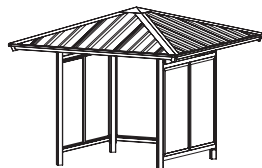
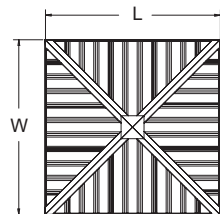
Shelter with 1' eave

Suggested Sizes

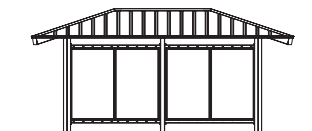
BIN	W	L
PLE-HC1	9'	9'
PLE-HC2	10'	18'

Additional sizes available in 1' increments

See polygon.com for the latest in windscreen and glazing selections.



PLX-HC1



PLX-HC2

Shelter with 2' eave

Suggested Sizes

BIN	W	L
PLX-HC1	12'	12'
PLX-HC2	13'	20'

Additional sizes available in 1' increments

ASSEMBLY

Polygon shelters are bolt-together steel frames, with a powder coat finish, that require no field welding. Roof decks are of either metal, tongue and groove southern yellow pine or structural insulated panels (with groove beaded ceiling). Secondary roofing is available in multi-rib, mega-rib, standing seam, asphalt shingles, or cedar shakes. This pre-designed package is shipped as a knocked-down pre-fabricated kit that includes the structural frame, roof deck, roofing, fasteners, trim, optional ornamentation and installation instructions. Smaller shelters can be erected quickly by maintenance crews or skilled volunteer labor. Certified Polygon Installers are recommended for the construction of large structures. Column footing design is provided by Polygon.



Frames are easily bolted together with provided fasteners



No field welding required during erection



Railing & ornamentation are installed with the frame



Frame complete and ready for roofing



The upper metal panel roofing is installed, then the cupola
For multi-rib roofing, all panels are factory cut



Installation of lower roofing panels

PICNIC TABLE CAPACITY

The matrices below provide the approximate picnic table capacities for each shelter. Totals were calculated using a standard picnic table size of 5'x6'. Numbers are approximate and informational only.

Polygonal Shelters

	Hex.	Oct.	Dod.
16'	2	1	
20'	4	4	
24'	5	4	
28'	7	5	
32'	8	8	
40'	14	14	16
48'	22	22	
50'			27
58'	34	36	
60'			41
64'	42	47	
66'			52
86'			79

Hip Roof Shelters

	12'	16'	20'	24'	30'	40'	50'
18'	2						
22'	3						
24'		6	7				
34'	5	8	10	12	16		
42'	6						
44'		12	14	18	20	30	
64'		16	22	25	32	42	56
84'			28	37	40	55	
104'				48	52	79	
70'							64
90'							81
110'							96

Gable Roof Shelters

	16'	20'	24'	30'	40'	50'
24'	6	6	9			
34'	8	10	12	16		
44'	12	14	18	20	30	
64'			25	32	42	56
84'			37	40	55	73
104'				52	79	90

Square Shelters

	12'	16'	20'	24'	30'	36'	40'	50'
Tables	1	2	6	8	14	20	25	42

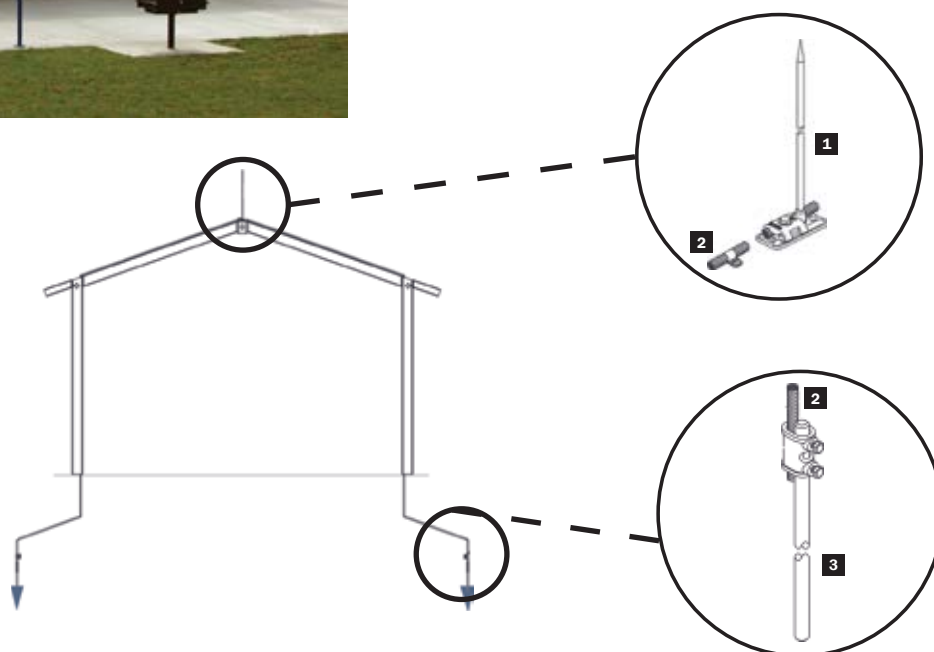
LIGHTNING PROTECTION



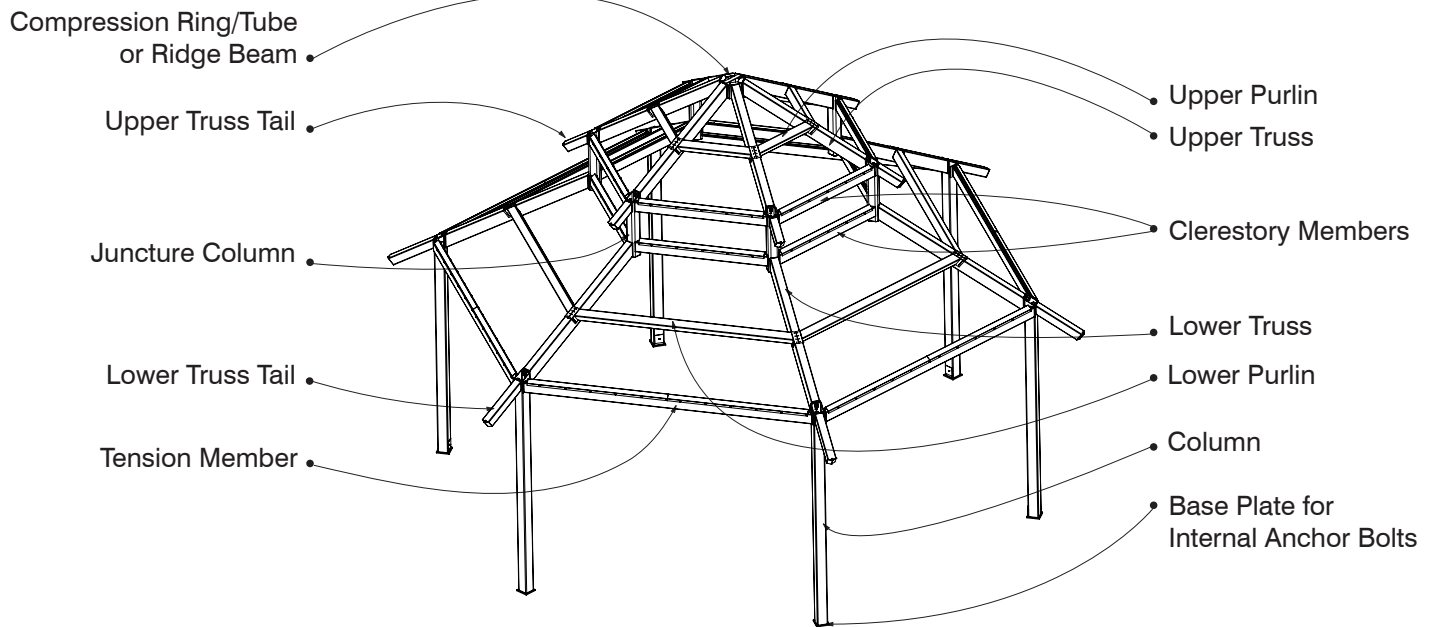
- 1 Air terminal rod, mounting hardware
- 2 Conductor cable
- 3 Ground rod, mounting hardware

Lightning protection systems provide a safe pathway for lightning charges to travel safely to the ground, protecting it from damage.

Lightning protection kit includes air terminal assemblies, down conductor wire, ground clamps, and ground rods.



SHELTER NOMENCLATURE



LEED POINTS

Polygon products can assist your project with LEED certification



What is LEED?

Leadership in Energy and Environmental Design (LEED) is a national standard developed by the United States Green Building Council (USGBC) to certify sustainable buildings. LEED buildings can help save energy, conserve resources, protect occupant health, and improve owners' bottom lines. LEED-NC (for new construction) v2009 is the most widely used standard. LEED utilizes a system of points awarded in multiple environmental categories for achieving specific levels of sustainable performance.

Sustainable Sites, Credit 4.2 - Alternative Transportation, Bicycle Storage Provide covered storage structures for securing bicycles for 15% of residential building occupants.	1
Sustainable Sites, Credit 7.1 - Heat Island Effect/Non-Roof Option 1: Provide shade for at least 50% of site hardscape with structures that have a minimum solar reflectance index (SRI) of 29'. Option 2: Place a minimum of 50% of parking spaces under cover that has a minimum SRI of 29'.	1
Sustainable Sites, Credit 7.2 - Heat Island Effect/Roof Use roofing materials on at least 75% with the following minimum SRI values: <ul style="list-style-type: none"> 78' (roof slopes ≤ 2:12) 29' (roof slopes > 2:12) 	1
Material and Resources, Credit 2 Construction Waste Management Most Polygon shelters have construction waste that is 95% recycleable. <ul style="list-style-type: none"> Recycle/salvage 50% of nonhazardous construction Recycle/salvage 75% of nonhazardous construction Recycle/salvage 95% of nonhazardous construction 	1 2 3
Material and Resources, Credit 4 Recycled Content Most Polygon shelters are made with at least 20% recycled content ³ . Some Polygon shelters are made with at least 30% recycled content. <ul style="list-style-type: none"> 10% of material made with recycled content. 20% of material made with recycled content. 30% of material made with recycled content. 	1 2 3
Indoor Environmental Quality, Environmental Tobacco Smoke (ETS) Control Prerequisite 2 Polygon shelters can assist by creating a designated smoking area.	Required

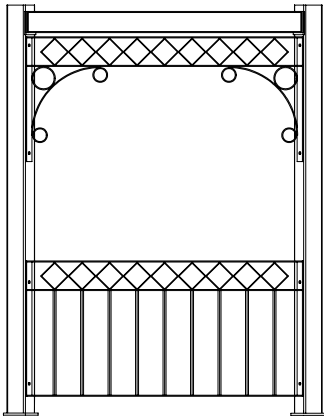
¹ Certain Polygon roof colors meet this requirement. (Contact customer service or your local sales representative for more information.)

² Contact customer service or your local sales representative for assistance in determining recycled content for your specific project.

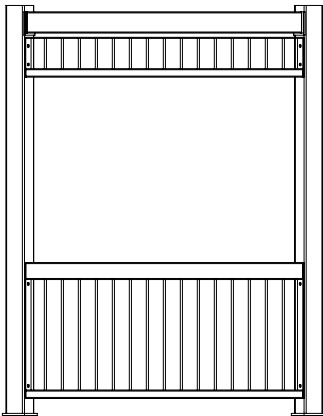
³ Recycled content is defined as post-consumer + 1/2 pre-consumer.

RAILING & OVERHEAD ORNAMENTATION

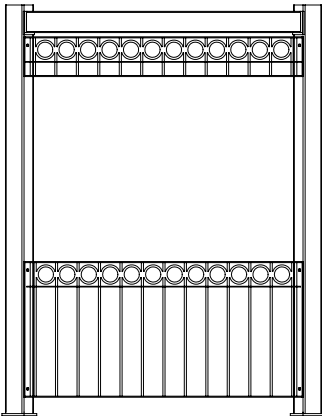
Our state-of-the-art laser can custom cut any ornamentation or railing. Please contact your sales representative to discuss other design ideas for your shelter.



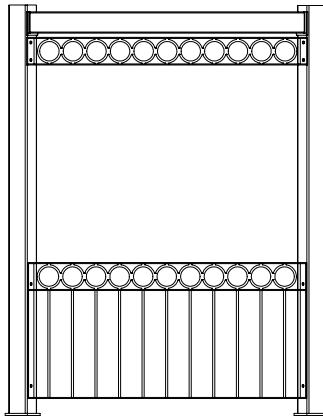
Diamond railing and overhead ornamentation
O1



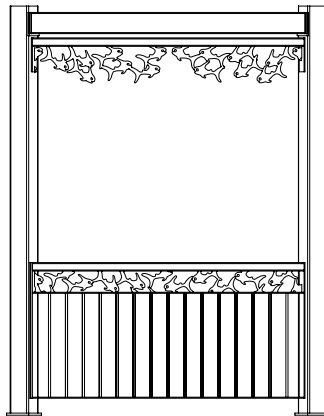
Carmel railing and overhead ornamentation
O2



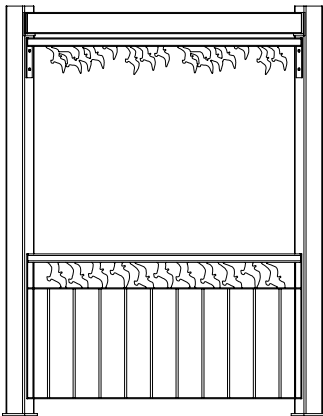
Sarasota railing and overhead ornamentation
O5



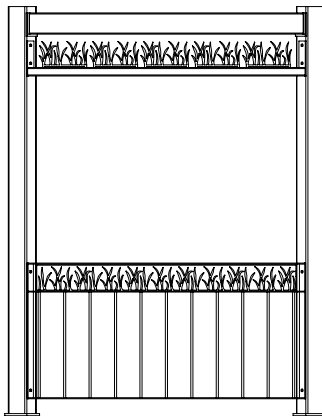
Tampa railing and overhead ornamentation
O6



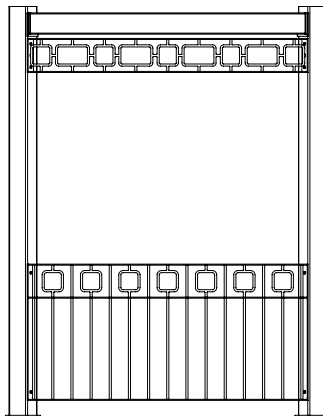
Fish railing and overhead ornamentation
O21



Gull railing and overhead ornamentation
O20



Sea Grass railing and overhead ornamentation
O22



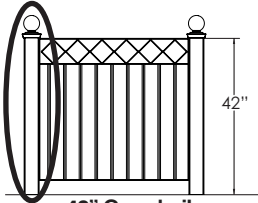
San Jose railing and overhead ornamentation
O4

Standard Stamped Metal Cap

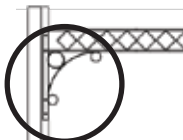


36" Railings

Lower Stanchion with Cast Iron Cap



42" Guardrails

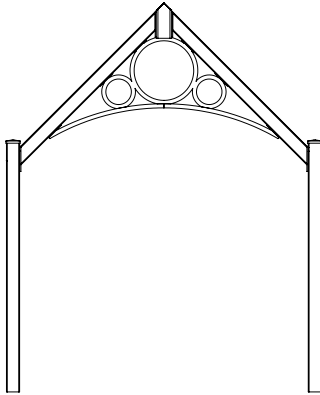


Diamond Corbel

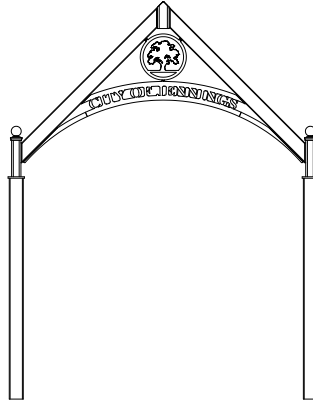


Upper Stanchion w/Cast Cap

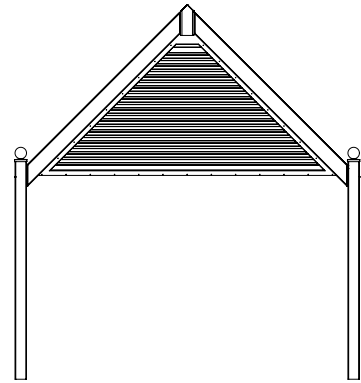
GABLE ORNAMENTATION



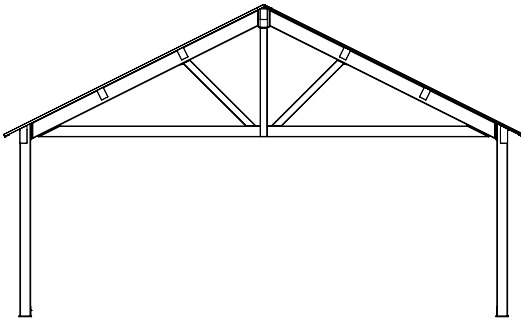
Gable circle ornamentation
O54



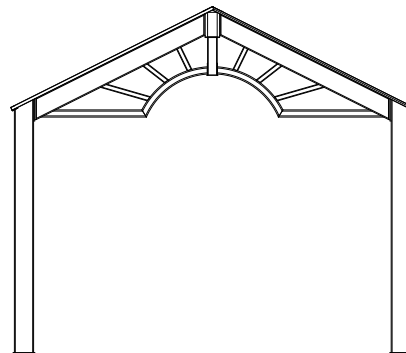
Gable Arch Text &
Medallion ornamentation
O51



Gable Louver ornamentation
O52



Gable Truss ornamentation
O53



Gable Sunshine ornamentation
O50

Ornamentation Selection

Overhead and Clerestory Ornamentation

Overhead ornamentation is available by itself or together with decorative railing and guardrail designs.

36" Railings

Railings are used to accent the shelter design and direct foot traffic throughout.

42" Guardrails

Code-compliant guard rails for instances when a building's walking surface is more than 30 inches above or below grade.

Upper and Lower Stanchions

Stanchions are required when the ornamentation span exceeds 10 feet. All stanchions come with the standard stamped cap. The cast stanchion cap is optional.

Corbels

Diamond corbels come standard with Diamond overhead ornamentation and are optional for any other style.

Custom Design

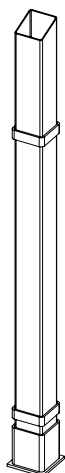
To create a unique look, custom design for all ornamentation is available upon request.

COLUMNS

- Columns come in a variety of shapes and sizes. Oversized square, round and rectangular columns are available with or without accent bands.
- Not all columns are available on all shelters. Consult Polygon for building specifics.
- Columns shown are for illustration only and are not meant to be standards. Bands can be placed in any quantity and most locations on any of the columns.
- The maximum height for the column base access holes is 11" (center). Band location must allow the access hole to be placed within the lower 11" of the column.
- Column sizes can often be oversized for look but cannot be undersized because of structural requirements.
- Stub columns (K98) are available for mounting on masonry, bricks or pieces designed by others.



Plain Square
K01



Windsor
K87



San Jose
K85



Round
K10



Dallas
K81



Alma
K80



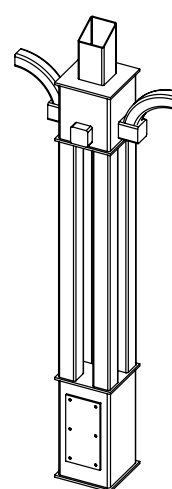
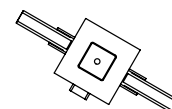
Wooster
K88



Neo Classic
Fiberglass Wraps
K83



Westminster
K86



Winchester
K89

COLUMN BASE CONNECTIONS



Pin Base



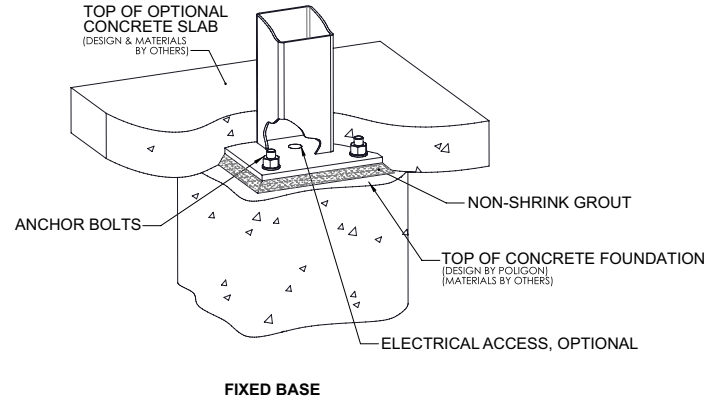
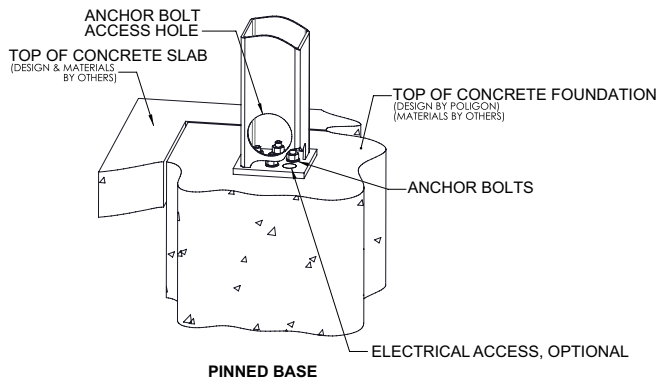
Direct Bury



Surface Mount Exposed



Surface Mount with Cover



ELECTRICAL CUTOUTS

Basic electrical access defined

When electrical access is requested, a 1 1/8" diameter hole is provided through the column baseplate and 3/4" diameter holes are provided through connection plates to allow wire access through columns, trusses, and into the compression ring/tube or ridge beam. Electrical access into additional members is available upon request.

Additional electrical cutout definitions

Electrical cutouts are round or rectangular holes in structural members required for installation of electrical fixtures or additional wire access. All cutout requests must be reviewed by our engineering department as their placement may affect structural integrity. Polygon is not responsible for unauthorized cutouts made in the field. Unauthorized electrical cutouts made in the field will void the shelter's warranty. To ensure a flush mounting of an electrical fixture, round columns will be equipped with a welded-in enclosure that accommodates a standard UL listed box.

Typical cutout locations:

- Outlet cutouts are typically placed 18" above grade on the inside face of the column.
- Light switch cutouts are typically located 48" above grade on the inside face of the column.
- All cutouts are at least 12" from any structural joints.
- All cutouts are typically centered on the member wall and not close to the corners.
- Cutouts can be located through cover plates, such as the bottom of a juncture column.
- The standard rectangular cutout size is 2 1/4" x 4 1/8" and round cutout size is 3/4" diameter.



LOW REVEAL CLERESTORY



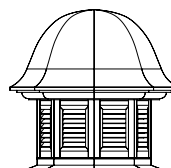
Standard Reveal Clerestory



S69 - Low Reveal Clerestory

CUPOLAS

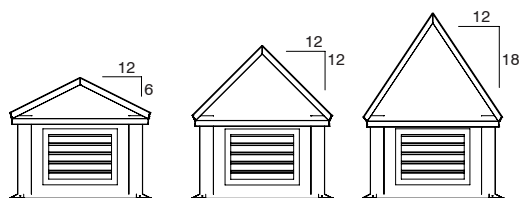
Cupolas have a three-letter code system. Each three-letter code (i.e. "CMA") begins with "C" to indicate Cupola, followed by a second letter indicating the style and a third indicating the pitch. Cupola size will be determined by building size, although specific size requests will be accommodated. Please consult with your sales representative for further details. Wood cupolas available upon request.



CN

Neo Classic Non-Venting

Available for Square, Hexagon, Octagon, and Dodecagon shelters.



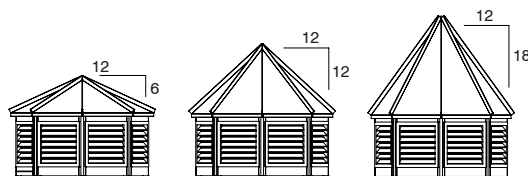
CMA

CMB

CMC

Sheet Metal Non-Venting (Square shown)

Available for Crossing, Gable Ridge, Square, Hexagon, and Octagon shelters.



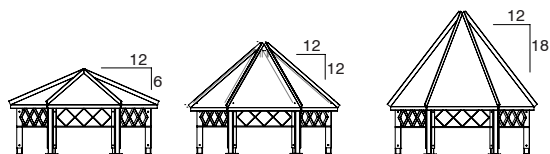
CVA

CVB

CVC

Framed Vented (Octagon shown)

Available for Square, Crossing, Gable Ridge, Hexagon, Octagon, and Dodecagon shelters.



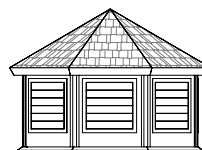
CFA

CFB

CFC

Framed Vented w/ or w/o Ornamentation (Hexagon shown)

Available for Square, Crossing, Gable Ridge, Hexagon, Octagon, and Dodecagon shelters. Ornamentation can vary with shelter.



CS

SIP Panel Roof for Asphalt Non-Venting (Octagon shown)

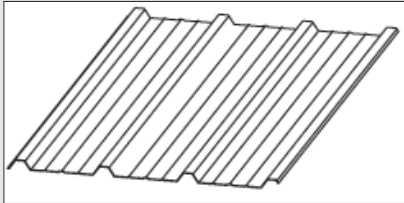
Available in 6:12 pitch for Hexagon, Octagon, and Dodecagon shelters.

ROOFS & ROOFING

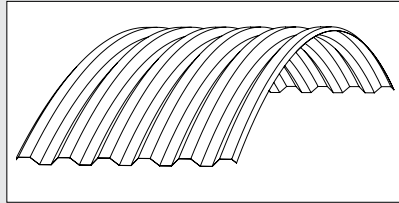
A variety of materials may be used for shelter roofs depending upon the site, budget, long-term maintenance and owner preference.

Typical factory-supplied options are tongue and groove (TG), structural insulated panel (SP) roofs, multi-rib (MR), mega-rib (MG), standing seam (SS), asphalt shingles (AS), and cedar shingle (CS) roofing. All standard metal roofing is Kynar 500® painted over galvalume coated steel, the best finish in the industry to resist fade and maintain color gloss. Custom-blended colors are not available in Kynar.

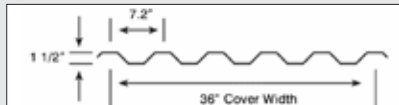
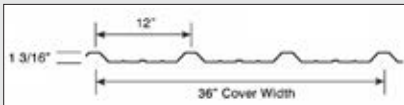
Multi-rib (MR) and mega-rib (MG) roofing each offer a high performance, high utility, combination roof and roof deck system. The 24-gauge galvanized steel panels are Kynar color coated on the top side with a white interior coat on the ceiling surface. These ribbed roofing systems are supplied pre-cut to length and angle. Polygon makes roofing trim with matching Kynar color trim as required. The metal roof deck is attached with paint-matched gasketed fasteners. When a metal roof deck is installed without a substrate roof, occasional interior roof condensation can occur. If such condensation might potentially damage interior contents, a TG or SP panel substrate roof is recommended.



Multi-Rib Roof Deck (MR)

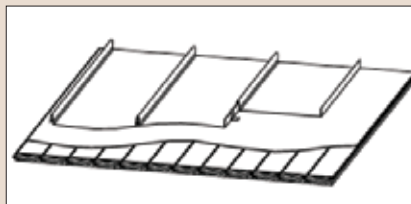


Mega-Rib Roof Deck (MG)



Multi-Rib Roof Interior

Standing Seam (SS) Metal Roofing is a premium architectural roofing system. Standing Seam is also furnished in Kynar exterior colors (with a white interior), and avoids the through-roof screws seen in rib roofing while creating a long-lasting visually distinctive roof. Standing Seam uses a series of concealed clips for attachment of the roof. Standing seam roofing is provided in blank lengths and must be field fitted to length and angle. Standing seam, when used without substrate, does not have the span capability of ribbed panel systems and may require more supports when used alone. Standing Seam is most often used with a substrate roof deck such as the available TG or SP options.



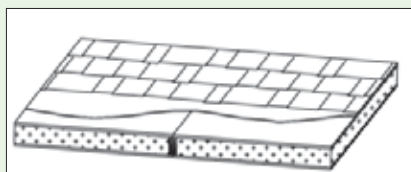
Standing Seam Over T&G (TGSS)



Tongue & Groove (T&G) Roof Interior

Tongue & Groove (TG) wood roof planks are nominal 2x6 tongue and groove southern yellow pine lumber edge V'd on both sides, allowing the installer to select the best face of the board to be displayed. T&G planks are field cut to length and screwed onto the shelter frame in the field. This lumber should be sealed with a weather resistant finish (supplied by others) to provide a visually uniform, long term finish. Multi-rib, mega-rib, standing seam, asphalt shingles, or cedar shakes are available from Polygon as the secondary roof over T&G.

The Structural Insulated Panel (SP or SIP) roof system is a preferred roof when an insulation system is required or a quicker substrate installation is desired. SP panels are factory pre-cut, recessed to accept the 2x4 spline locking system and are fastened with long specialty SP screws into the frame. Panels lock together making a seamless ceiling surface when viewed from below. The SP roof panel ceiling surface is made with exterior rough sawn reverse board and batten 5/8" plywood with grooves 4" O.C. The core is 3 5/8" EPS foam and the roof deck is 7/16" OSB (Oriented Strand Board). Also available for the SP ceiling surface is a white, embossed aluminum over OSB. The SP ceiling surface should be sealed with a weather resistant finish (supplied by others) to provide a visually uniform, long term finish. The 4 1/2" thick SP has an "R" value of 15.2. Multi-rib, mega-rib, standing seam, asphalt shingles, or cedar shakes are available from Polygon as the secondary roof over SP.



Shingles Over SIP Roof Deck (SPAS)



Structural Insulated Panel (SIP) Roof Interior

*When the entire roof package is supplied by Polygon, 30# asphalt felt is also supplied. If a partial roofing package is supplied, the felt must be supplied by others.

POLI-5000®

The Most Durable Frame Finish Available



Poli-5000 is a completely in-house process, performed and overseen by PorterCorp.

Steps include:

- Eight-direction shot blasting of steel to near white condition
- Wash and iron phosphate treatment
- Special epoxy primer powder coat base
- Super Durable TGIC powder top coat
- Baking and curing
- Inspection and packaging

Why Poli-5000?

- Superior performance results over traditional powder coat
- Reduced overall cost and a better finish than field painting over factory applied red oxide primers
- No VOC's with Poli-5000
- More environmentally friendly than liquid paint, ecoat primer, and zinc rich primer systems
- Reliable in-house inspection of all parts
- Upgrade from 'standard' to Super Durable TGIC provides superior color and gloss retention as well as corrosion resistance
- No need for clear top coats (that make touch-up blotchy) when using Super Durable TGIC
- Large offering of 24 standard smooth colors and 10 textured colors

Test Description	Test Method	Poli-5000 Results
Salt Spray Resistance	ASTM B 117/ ASTM D 1654 Method 2 (scraping)	10,000 hours, no creep from scribe line, rating of 10
Humidity	ASTM D2247-02	5,000 hours with no loss of adhesion or blistering
Light UV/ Resistance	ASTM G154-04 2000 hours exposure. Alternate cycles (4 hours UVC and 4 hours condensation)	a) No chalking b) 75% color retention c) Color variation-maximum 3.0 E variation CIE formula (before and after 2,000 hours exposure)
Stain Resistance	ASTM D1308-02e1 24 hours exposure with 10% concentration	No stain from following: Mustard, Tannic Acid, Catsup, Citric Acid, Coffee, Tartaric Acid, Pepsi Cola, Beer, Oleic Acid, Lactic Acid, Orange Juice
Scratch Resistance	Hoffman Scratch Hardness Tester	No substrate appearance with 1,000 gram load
Adhesion	ASTM D3359-02	ASTM Class 4B rating or better
Resistance Impact	ASTM D2794-93	100 in-lbs. w/o cracking
Hardness	ASTM D3363-92a	2H min-no indentation
Flexibility	ASTM D522-93a	1/8" no cracking/loss of adhesion at bend
Abrasion	Taber abraser CS10 Wheel (1,000 mg load)	14 mg. max weight loss per cycle
Solvent Resistance	50+ MEK rubs	Minimal to no dulling or color removal

Poligon Alternate Finishes

"E"-Coat Undercoating combines a dip process with an electro-deposition applied epoxy coating that bonds to the steel. The combination of "E"-coating and powder coating is a durable finish, and is comparable to Poli-5000. Because "E"-Coating is an electric depositing process, a "Faraday Effect" is created where acute angles and tube interiors create a short circuit and "E"-Coating is not deposited. Tests have also shown (contrary to common belief) that "E"-coating does not deposit coating inside the entire interior.

Prime Coat Only for Field Painting

When prime painting-only is requested, Poligon provides a superior job by first shot blasting then priming with a special powder-gray powder coat. This system is highly preferred over the hand wiping with rags and red oxide primer systems found elsewhere.

Hot Dip Galvanizing

A simple, long-accepted method of protecting steel from rust. It works best on plain sheets, basic tubes and other uncomplicated parts, resulting in a rough, spangled silver finish. It provides the best corrosion protection in salt-air conditions, and is also the most costly finishing option. Hot Dip Galvanizing is recommended for use in conjunction with field painting.

Poligon powder coats all exposed washers, nuts, and bolts on every shelter



FRAME & ROOF COLORS

Colors shown are only representative. Order a color chart (L948) or actual color samples from our website, www.poligon.com

Frame Colors



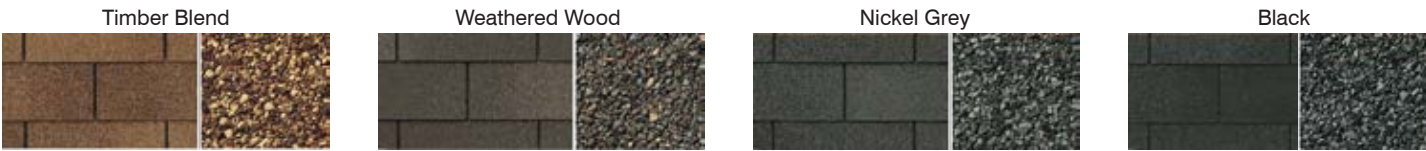
* Colors represented with an asterisk (*) are also available in a textured finish

Metal Roof Colors



For color ideas, visit our website to see combinations of frame and roof colors together

Shingle Colors





Custom Gables
Kissimmee, FL

Designed, Engineered, Manufactured - For Your Site

poligon[®]

www.poligon.com

NJPA
National Joint Powers Alliance®
Contract #022113-PPC

Information, including colors and sizes, subject to change.
Please visit our website for latest options and offerings.



L965