

A Division of PORTERCORP 4240 N. 136th AVE HOLLAND, MI 49424 (616) 399-1963
 Designs and calculations of PARASOL buildings are protected under copyright laws and patents and may not be used in the construction or design of a building that is not supplied by PorterCORP.
 Copyright laws protect the style and visual appearance of the structure while patents may protect other parts of the design.

BUILDING TYPE: FSD8-4DB-8EV-Y368

PROJECT NUMBER: Y368

PROJECT NAME: DANVILLE CHILD DEVELOPMENT CENTER

PROJECT LOCATION: DANVILLE, PA 17821

DRAWING NOTES

DRAWING LIST

DESIGN CRITERIA: SEE CALCS

MATERIALS	ASTM DESIGNATION
TUBE STEEL	see calculations
LIGHT GAGE COLD FORMED STRUCTURAL STEEL PLATE	see calculations A-36

HIGH STRENGTH BOLTING
 ALL HIGH STRENGTH BOLTS ARE A-325 WITH HEAVY HEX NUTS AND ARE TO BE INSTALLED BY THE "TURN-OF-THE-NUT" METHOD SPECIFIED IN THE NINTH EDITION OF THE AISC "SPECIFICATION FOR STRUCTURAL JOINTS USING ASTM A325 OR A490 BOLTS" PER SECTION 8 D (1). A-325 BOLTS MAY BE INSTALLED WITHOUT WASHERS WHEN TIGHTENED BY THE "TURN-OF-THE-NUT" METHOD. IT IS THE RESPONSIBILITY OF THE ERECTOR TO INSURE PROPER TIGHTNESS.

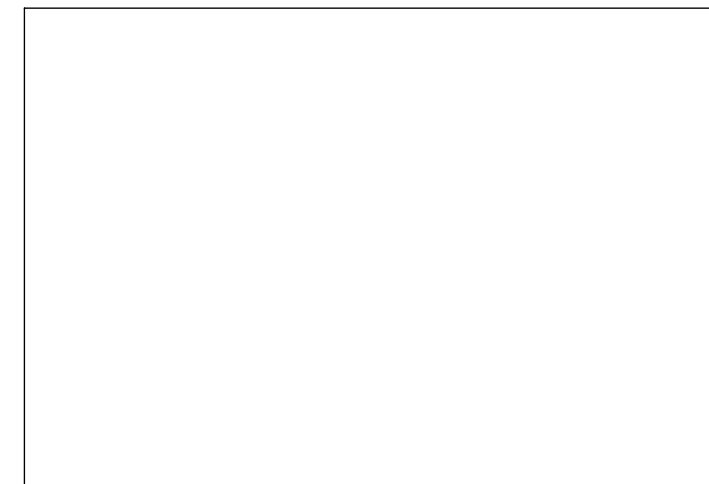
ALL WELDING IS PERFORMED BY AWS CERTIFIED WELDERS AND CONFORMS TO THE LATEST EDITION OF AWS D1.1 OR D1.3 AS REQUIRED.

IF THESE DRAWINGS ARE SEALED, THE SEAL APPLIES ONLY TO THE MATERIALS SUPPLIED BY PARASOL AND PORTERCORP AND IS NOT INTENDED AS THE SEAL OF THE ENGINEER OF RECORD FOR THE ENTIRE PROJECT.

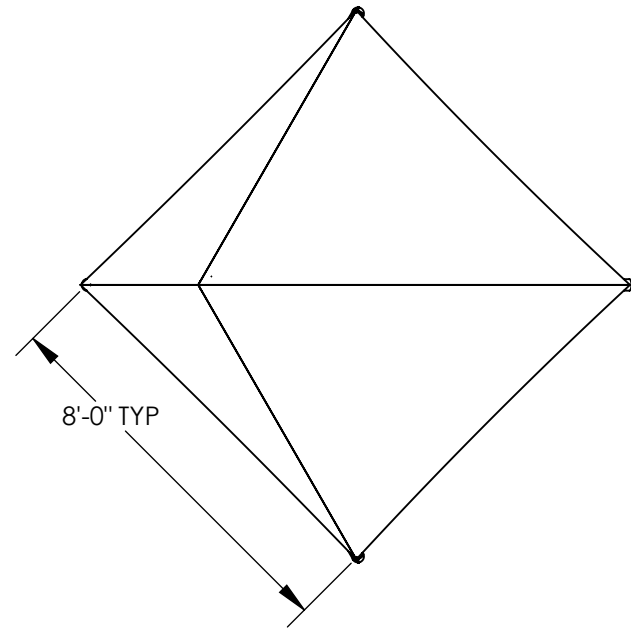
PARTS SHOWN MAY BE UPGRADED DUE TO STANDARDIZED FABRICATION. REFER TO THE SHIPPING BILL OF MATERIALS FOR POSSIBLE SUBSTITUTIONS.

FOR PROPER FIELD INSTALLATION OF THE BUILDING IT IS RECOMMENDED THAT THE PRIMARY FRAMING INSTALLER AND THE FABRIC ROOF INSTALLER HAVE A MINIMUM OF FIVE (5) YEARS OF DOCUMENTED EXPERIENCE INSTALLING THIS TYPE OF PRODUCT.

SHEET NO.	DESCRIPTION
CS	COVER SHEET
1	ELEVATION
2	FRAME ASSEMBLY
4	ANCHOR BOLT LAYOUT
4.1	FOOTING FOUNDATION
5	CONNECTION DETAILS



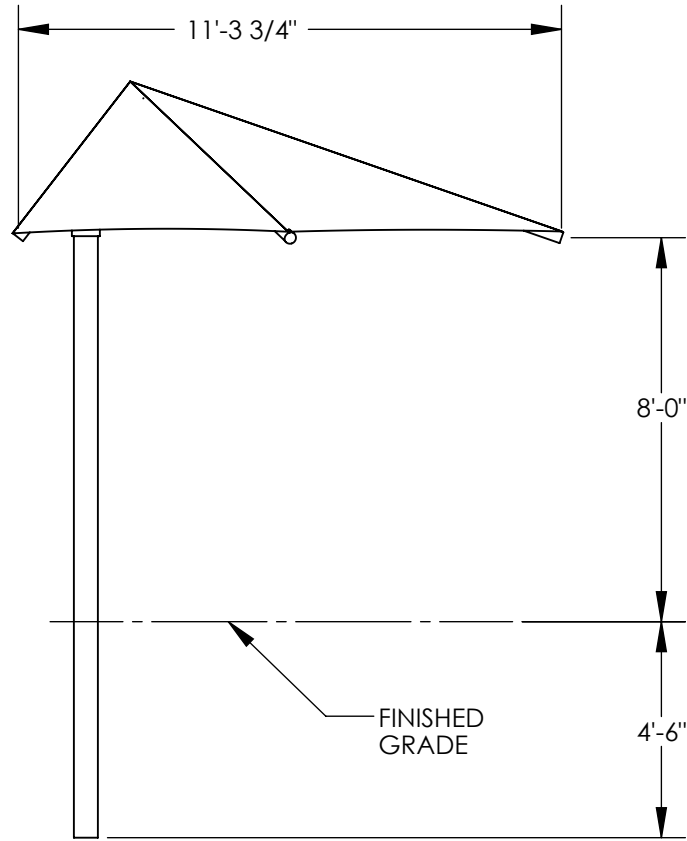
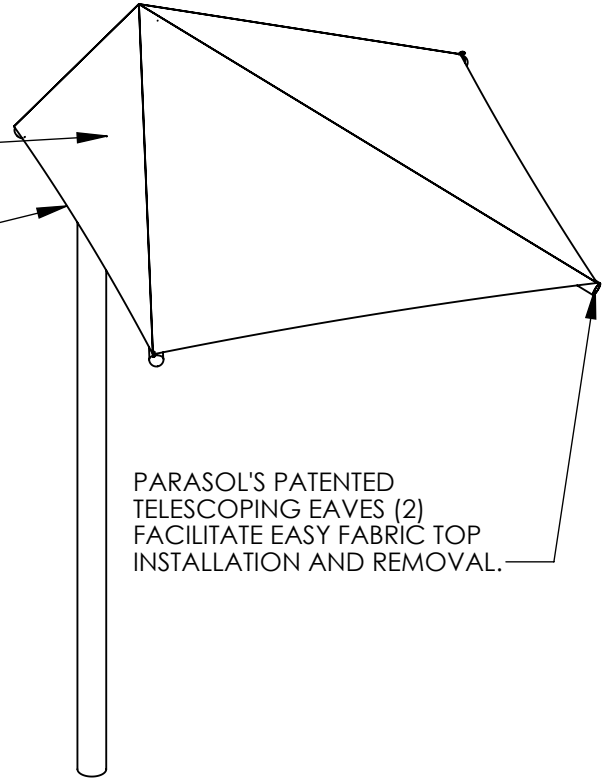
SHEET
CS



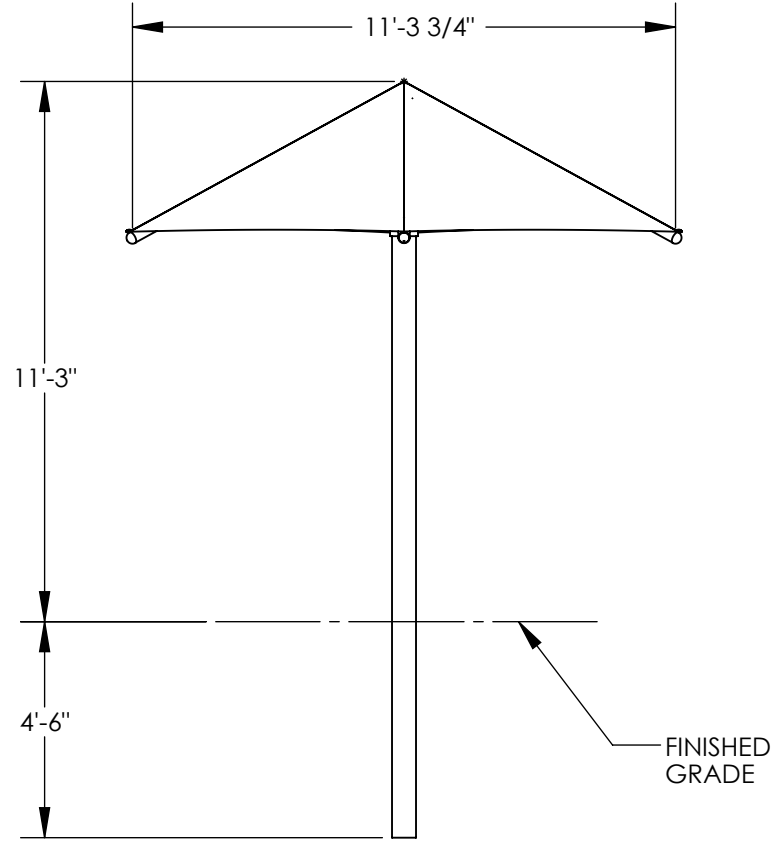
PLAN VIEW

FABRIC SPECIFICATIONS
 HIGH DENSITY POLYETHYLENE (HDPE), RACHEL-KNITTED
 PROPERTIES (DEPENDING UPON COLOR):
 WEIGHT: .61 - .72 OZ./SQ. FT.
 % UV BLOCKOUT: 88 - 95
 % SUN SHADE: 76 - 91
 FLAME RESISTANCE: ASTM E 84 - CLASS 1
 FLAME SPREAD INDEX = 10
 SMOKE DEVELOPMENT INDEX = 60

STAINLESS STEEL
 PERIMETER CABLE



FRONT ELEVATION



SIDE ELEVATION

ISOMETRIC
 VIEW

THIS SEAL PERTAINS ONLY TO THE MATERIALS SUPPLIED BY PARASOL.
 THIS SEAL DOES NOT SERVE AS - OR REPRESENT - THE PROJECT
 ENGINEER OF RECORD AND SHALL NOT BE CONSTRUED AS SUCH.

FILENAME: FSD8-4DB-8EV-Y368

DIRECTORY: C:\Documents and Settings\joesal\My Documents\My Solidworks\PARASOL\Y368\

PATENTED AND/OR PATENTS PENDING COPYRIGHT 2004 PORTERCORP HOLLAND, MI 49424

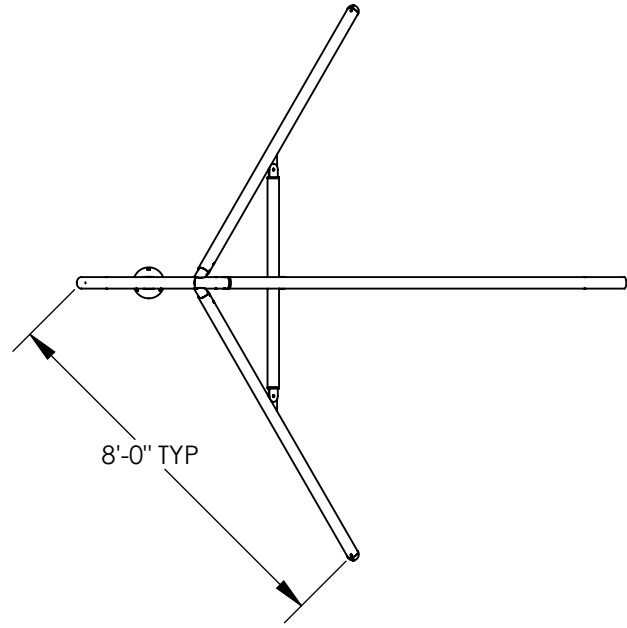
parasol™ 800-354-7721
 www.parasolnet.com
 by PORTERCORP
 PORTERCORP 4240 N. 136th AVE HOLLAND, MI 49424

DATE: 8/22/2007	SCALE: 1:48
MODEL: FSD8-4DB-8EV-Y368	REV LEVEL: 1
DRAWN BY: joesal	CHECKED BY:
LEVEL 2: PRELIMINARY ONLY FOR CUSTOMER APPROVAL <input type="checkbox"/>	
LEVEL 3: FINAL DRAWING FOR PRODUCTION AND ERECTION <input checked="" type="checkbox"/>	

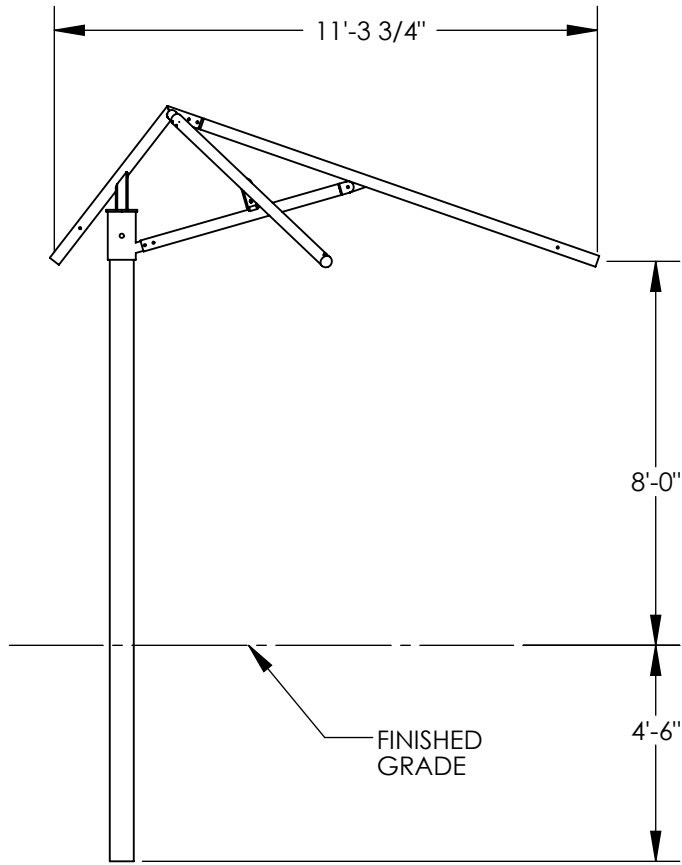
DESCRIPTION: FSD8-4DB7-6EV	PROJECT: DANVILLE CHILD DEVELOPMENT CENTER
ELEVATION	
LEVEL 1: ESTIMATING ONLY NOT FOR PRODUCTION <input type="checkbox"/>	

SHEET
1

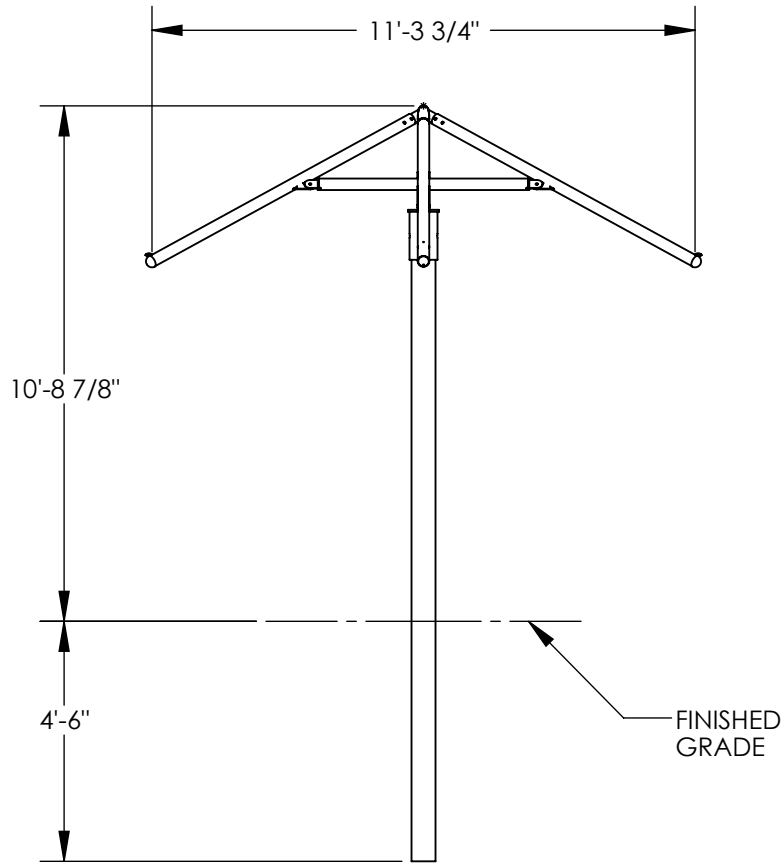
DIRECTORY: C:\Documents and Settings\joesal\My Documents\My Solidworks\PARASOL\Y368\ FILENAME: FSD8-4DB-8EV-Y368



PLAN VIEW

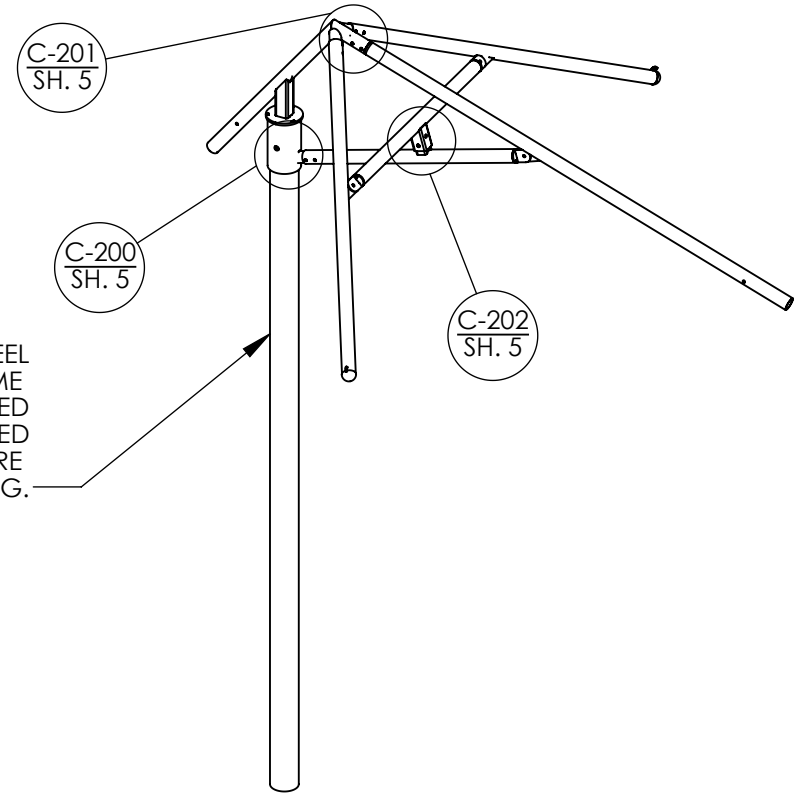


FRONT ELEVATION



SIDE ELEVATION

STRUCTURAL STEEL
FRAME
STANDARD: SHOT BLASTED
AND POWDERCOATED
OPTIONAL: E-COATING BEFORE
POWDER COATING.

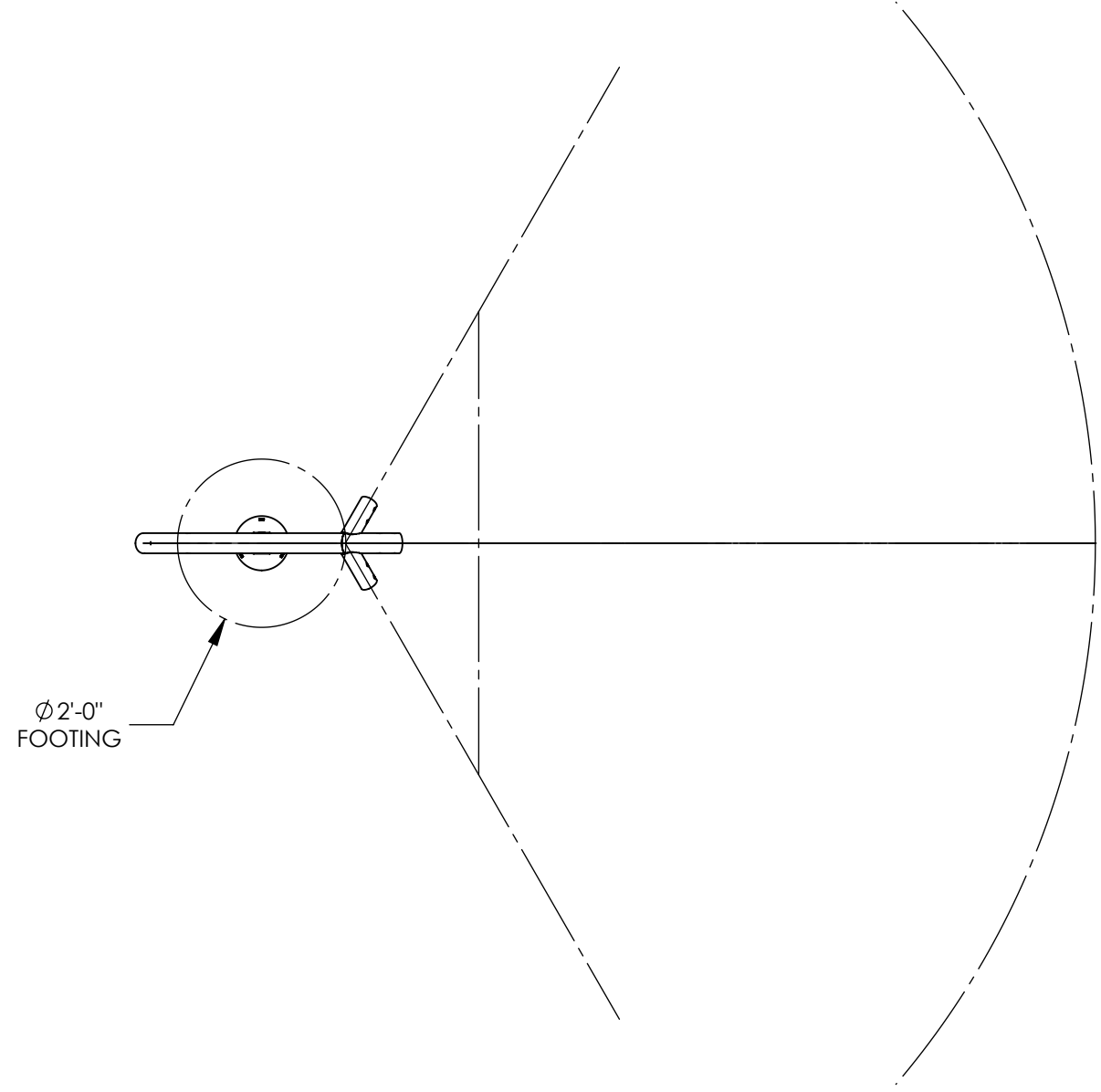


ISOMETRIC
VIEW

THIS SEAL PERTAINS ONLY TO THE MATERIALS SUPPLIED BY PARASOL.
THIS SEAL DOES NOT SERVE AS - OR REPRESENT - THE PROJECT
ENGINEER OF RECORD AND SHALL NOT BE CONSTRUED AS SUCH.

MODEL: FSD8-4DB-8EV-Y368	DATE: 8/22/2007
DRAWN BY: joesal	CHECKED BY: joesal
REV LEVEL:	SCALE: 1:48
LEVEL 3: FINAL DRAWING FOR PRODUCTION AND ERECTION <input checked="" type="checkbox"/>	
LEVEL 2: PRELIMINARY ONLY FOR CUSTOMER APPROVAL <input type="checkbox"/>	
LEVEL 1: ESTIMATING ONLY NOT FOR PRODUCTION <input type="checkbox"/>	

DESCRIPTION: FSD8-4DB7-6EV
PROJECT: DANVILLE CHILD DEVELOPMENT CENTER
FRAME ASSEMBLY <input type="checkbox"/>



ANCHOR LAYOUT

THIS SEAL PERTAINS ONLY TO THE MATERIALS SUPPLIED BY PARASOL.
 THIS SEAL DOES NOT SERVE AS - OR REPRESENT - THE PROJECT
 ENGINEER OF RECORD AND SHALL NOT BE CONSTRUED AS SUCH.

patented and/or patents pending copyright 2004 portercorp holland, mi 49424

parasol™ 800-354-7721
 www.parasolnet.com

by PORTERCORP
 PORTERCORP 4240 N. 136th AVE HOLLAND, MI 49424

MODEL:	FSD8-4DB-8EV-Y368	DATE:	8/22/2007
DRAWN BY:	joesal	REV LEVEL:	
CHECKED BY:		SCALE:	1:25
LEVEL 2: PRELIMINARY ONLY FOR CUSTOMER APPROVAL		LEVEL 3: FINAL DRAWING FOR PRODUCTION AND ERECTION	
<input type="checkbox"/>		<input checked="" type="checkbox"/>	

DESCRIPTION:	FSD8-4DB7-6EV
PROJECT:	DANVILLE CHILD DEVELOPMENT CENTER
ANCHOR BOLT LAYOUT	<input type="checkbox"/>
LEVEL 1: ESTIMATING ONLY NOT FOR PRODUCTION	<input type="checkbox"/>

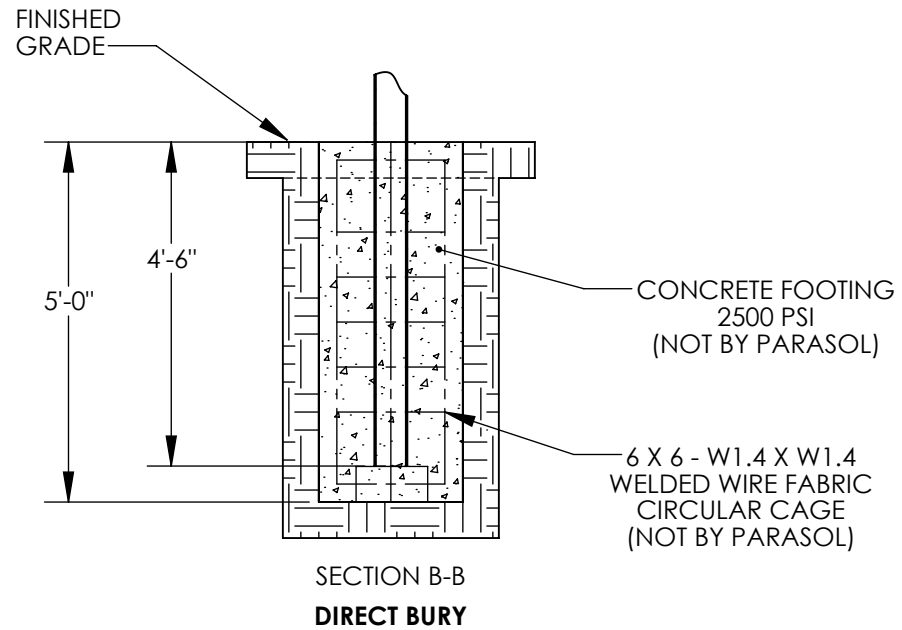
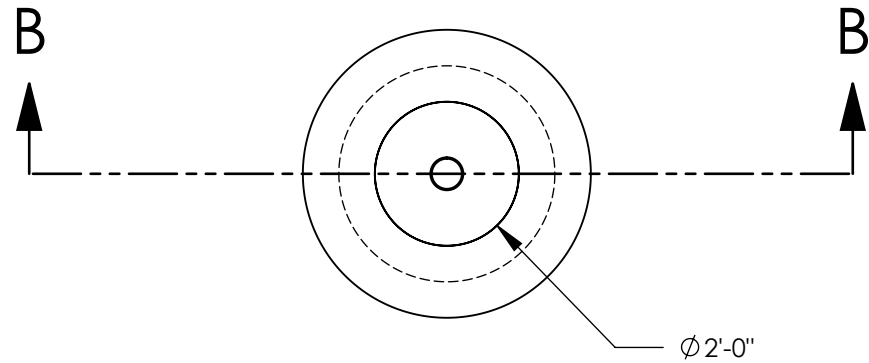
FILENAME: FSD8-4DB-8EV-Y368

DIRECTORY: C:\Documents and Settings\joesol\My Documents\My Solidworks\PARASOL\Y368\

DIRECTORY: C:\Documents and Settings\joesol\My Documents\My Solidworks\PARASOL\Y368\

FOUNDATION NOTES:

1. All materials and workmanship shall conform to the requirements of the latest edition of the Local Building Code, and all-applicable local ordinances and requirements.
2. The concrete design is based on a 28-day strength of 2500 psi, but the contractor is urged to use a 28-day strength of 3000 psi. Type V cement is recommended.
3. Anchor bolts shall be A307 quality and recommended to be the "headed" type bolt if not using the anchor bolts supplied by the manufacturer.
4. No soils report has been utilized in the sizing of the footing shown. The allowable soil bearing pressure has been assumed to be 1500 psf, "non-site specific". If a soils report or soils engineer are used, the recommendations of the report or the engineer shall follow.
5. The reinforcing steel shall be new and unused and shall conform to the requirements of ASTM A615 GR 60.
6. The spread footing shall bear on competent undisturbed soil or compacted fill to 95%. If signs of organic material, uncontrolled fill, clay or silt, high water table or other possible detrimental conditions are found installation must be discontinued and a soils engineer contacted. The soils engineer must then evaluate the soil properties before the foundation can be installed. A local foundation design engineer must then redesign the foundation based on the soils conditions.
7. All concrete installation shall conform to the requirements of the American Concrete Institute (ACI) building code, ACI 318, latest edition and all-local ordinances and requirements.
8. If the area has a specific frost line depth that the foundation must extend down to meet, the foundation depth must be increased as well as the reinforcing steel requirement. If you need to meet a frost line depth you will need to call Parasol engineering to get the increase requirements for the reinforcing steel.



parasol[™] 800-354-7721
 www.parasolnet.com
 by PORTERCORP
 PORTERCORP 4240 N. 136th AVE HOLLAND, MI 49424

MODEL:	FSD8-4DB-8EV-Y368	DATE:	8/22/2007
DRAWN BY:	joesol	SCALE:	1:32
CHECKED BY:		REV LEVEL:	
LEVEL 2: PRELIMINARY ONLY FOR CUSTOMER APPROVAL		LEVEL 3: FINAL DRAWING FOR PRODUCTION AND ERECTION	

DESCRIPTION:	FSD8-4DB7-6EV	<input type="checkbox"/>	LEVEL 1: ESTIMATING ONLY NOT FOR PRODUCTION
PROJECT:	DANVILLE CHILD DEVELOPMENT CENTER	<input checked="" type="checkbox"/>	LEVEL 3: FINAL DRAWING FOR PRODUCTION AND ERECTION

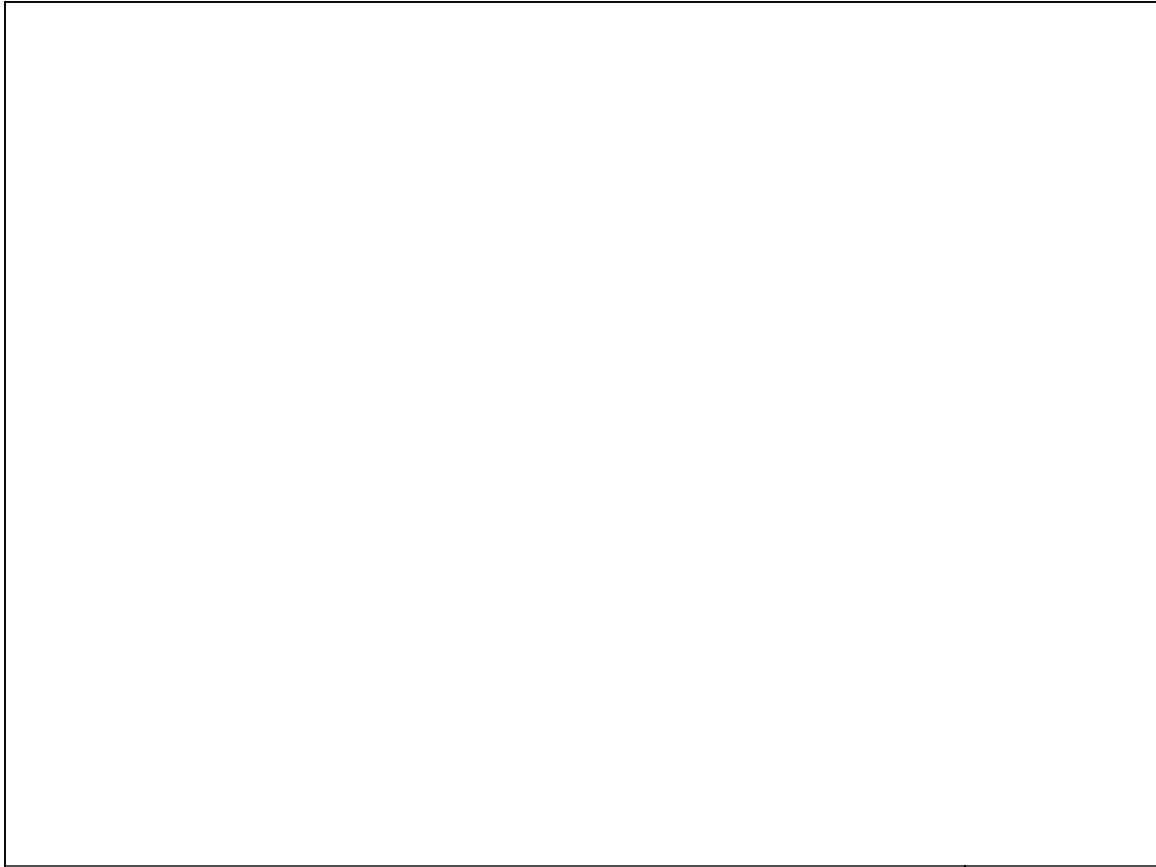
SHEET
4.1

THIS SEAL PERTAINS ONLY TO THE MATERIALS SUPPLIED BY PARASOL.
 THIS SEAL DOES NOT SERVE AS - OR REPRESENT - THE PROJECT ENGINEER OF RECORD AND SHALL NOT BE CONSTRUED AS SUCH.

PATENTED AND/OR PATENTS PENDING. COPYRIGHT 2004 PORTERCORP HOLLAND, MI 49424

FILENAME: FSD8-4DB-8EV-Y368

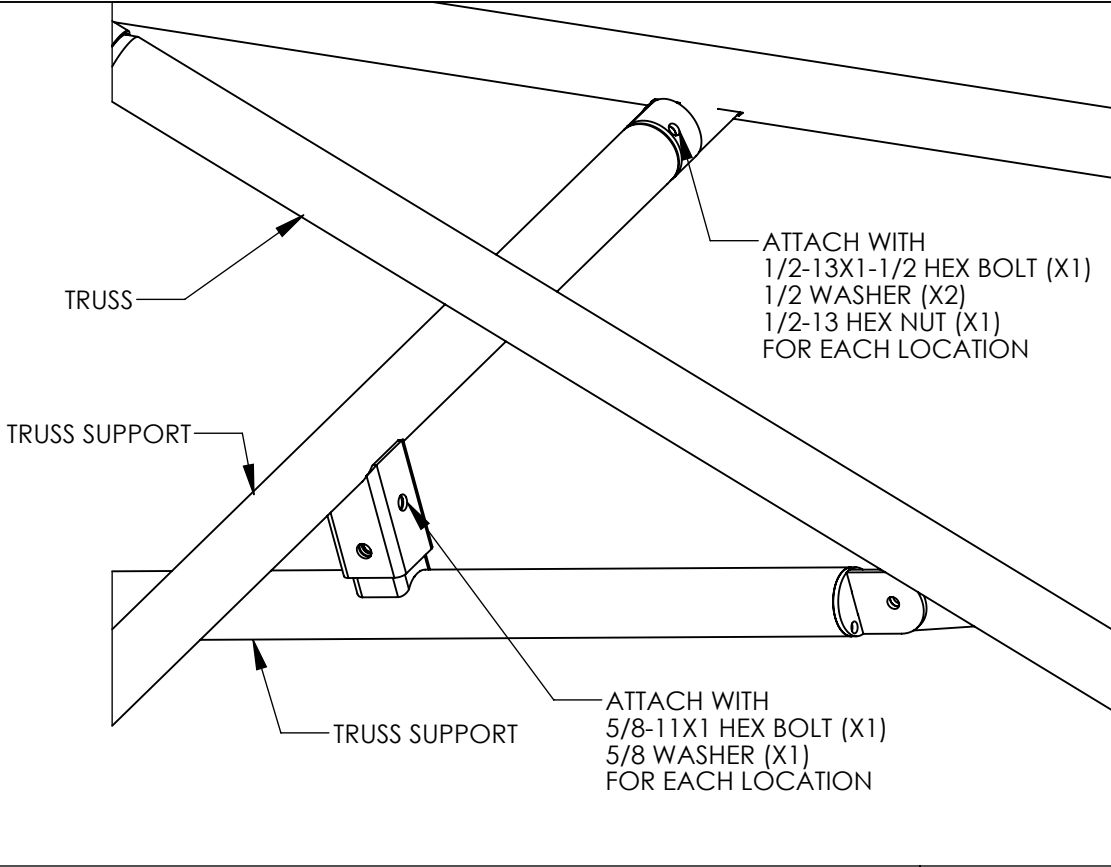
DIRECTORY: C:\Documents and Settings\joesal\My Documents\My Solidworks\PARASOL\Y368\



C-203

TRUSS SUPPORT CONNECTION @ TRUSS

C-202

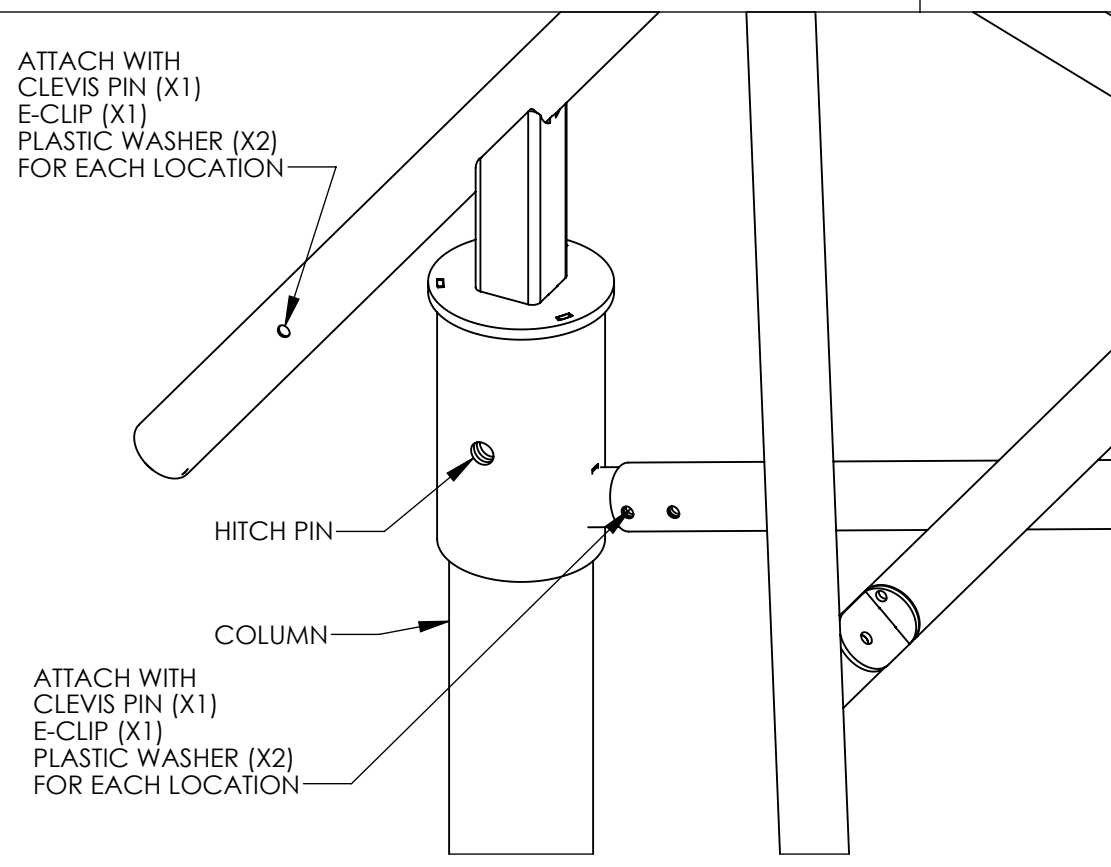


TRUSS CONNECTION @ UPR COLUMN

C-201

UPPER COLUMN CONNECTION @ LWR COLUMN

C-200



NOTES:
 ALL HIGH STRENGTH BOLTS ARE A-325 BOLTS AND ARE TO BE INSTALLED BY THE "TURN OF THE NUT" METHOD AS SPECIFIED IN THE 9TH EDITION OF THE AISC "SPECIFICATION FOR STRUCTURAL JOINTS USING ASTM A325 OR A490 BOLTS", SECTION 8 D (1). A-325 BOLTS MAY BE INSTALLED WITHOUT WASHERS WHEN TIGHTENED BY THE "TURN OF THE NUT" METHOD. IT IS THE RESPONSIBILITY OF THE ERECTOR TO INSURE PROPER TIGHTNESS.

INSPECTION OF HIGH STRENGTH BOLTING, IF REQUIRED TO BE PER CHAPTER 17 OF THE UNIFORM BUILDING CODE (UBC), STANDARD BUILDING CODE (SBCCI) NATIONAL BUILDING CODE (BOCA), CALIFORNIA BUILDING CODE (CBC2001), OR THE INTERNATIONAL BUILDING CODE (IBC).

ERECTION OF THE FRAMING MEMBERS WILL REQUIRE THE MAIN COLUMNS TO BE PLUMB, SQUARE AND TIGHTENED BEFORE INSTALLING THE PURLINS. PURLINS, IF REQUIRED, MUST BE PARALLEL TO THE EAVE BEAMS AND TENSION MEMBERS.

parasol™ 800-354-7721
 www.parasolnet.com
 by PORTERCORP
 PORTERCORP 4240 N. 136th AVE HOLLAND, MI 49424

MODEL: FSD8-4DB-8EV-Y368
 DRAWN BY: joesal
 CHECKED BY:
 DATE: 8/22/2007
 SCALE: 1:64
 REV LEVEL:
 LEVEL 3: FINAL DRAWING FOR PRODUCTION AND ERECTION
 LEVEL 2: PRELIMINARY ONLY FOR CUSTOMER APPROVAL
 LEVEL 1: ESTIMATING ONLY NOT FOR PRODUCTION

DESCRIPTION: FSD8-4DB7-6EV
 PROJECT: DANVILLE CHILD DEVELOPMENT CENTER
 CONNECTION DETAILS

SHEET
5

THIS SEAL PERTAINS ONLY TO THE MATERIALS SUPPLIED BY PARASOL. THIS SEAL DOES NOT SERVE AS - OR REPRESENT - THE PROJECT ENGINEER OF RECORD AND SHALL NOT BE CONSTRUED AS SUCH.

PATENTED AND/OR PATENTS PENDING. COPYRIGHT 2004 PORTERCORP HOLLAND, MI 49424